



Bluescope Steel Pty Ltd  
ABN 16 000 11 058  
Templar Road  
PO Box 3003  
St Marys South NSW 2760

**BLUESCOPE STEEL LIMITED.**  
**Western Sydney Service Centre**  
**Licence 12495**

[Link to Environment Protection Licence 12495](#)

**LICENCE MONITORING DATA**  
**ANNUAL SUMMARY REPORT**

Period

**9 Jun 2021 to 9 Jun 2022**

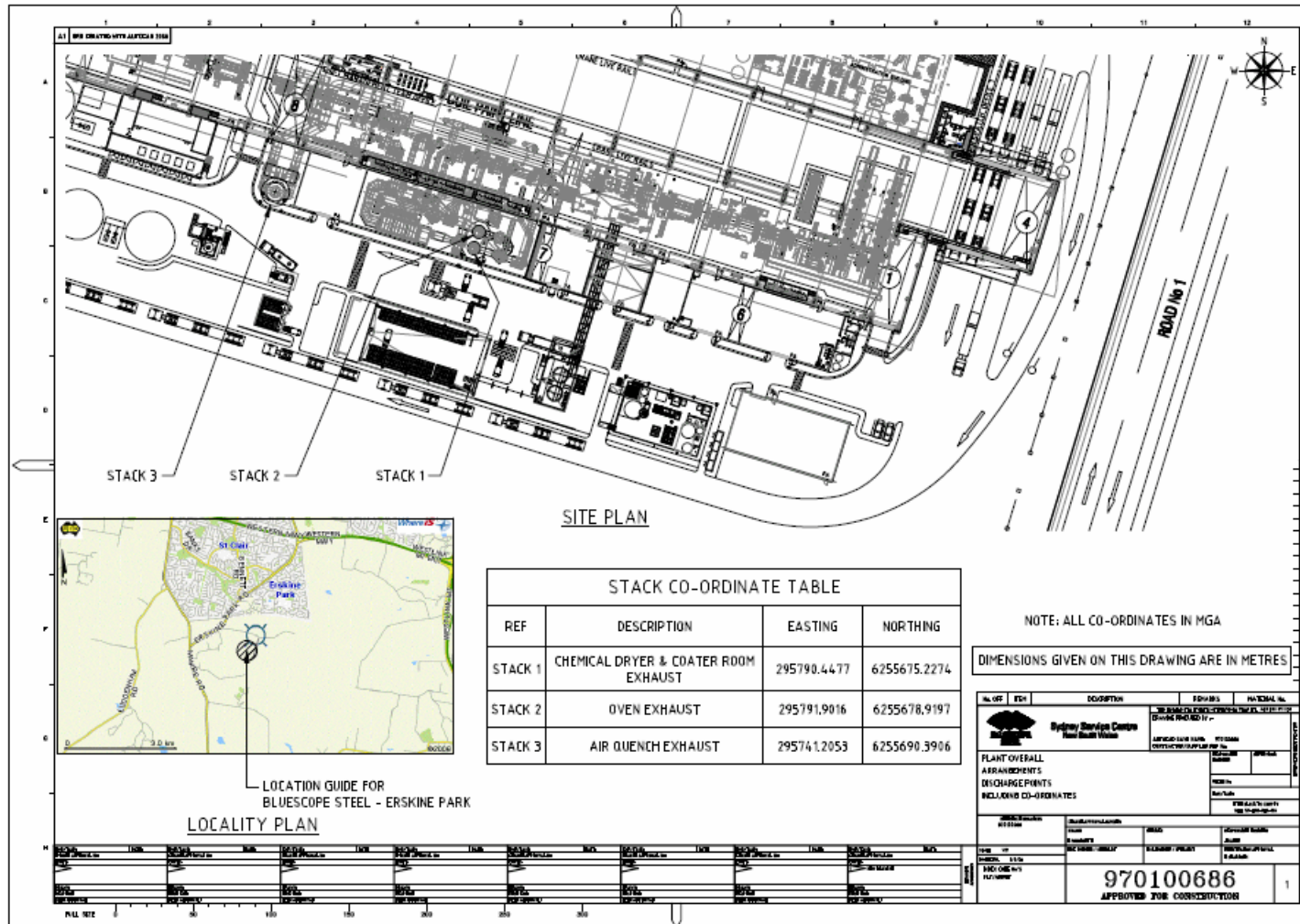
Annual (Jun 2021 - Jun 2022) Report Published: 9, June, 2022

Date Obtained: 08/06/2022



## Location of monitoring/discharge points and areas.

EPL12495 Conditions P1





## Stack Air Monitoring Requirements

EPL12495 Conditions L 2.4, M 2.1.

### Point 1:

Pollutant	Units of Measure	Monitoring frequency required by licence	No. of times measured during the year	Min. Value	Max. Value	100 percentile concentration limit	Exceedance (years / no) *
Volatile Organic Compounds	milligrams per cubic metre	Annually	1	4.00	4.00	20	no

Comment:

### No Pollutant Limit Exists:

Pollutant	Units of Measure	Monitoring frequency required by licence	No. of times measured during the year	Min. Value	Mean Value	Medium Value	Max. Value
Velocity	metres per second	Annually	1	11.00	11.00	11.00	11.00
Volumetric flowrate	m <sup>3</sup> /s (0°C,101.3,dry)	Annually	1	19.00	19.00	19.00	19.00



**Point 2:**

Pollutant	Units of Measure	Monitoring frequency required by licence	No. of times measured during the year	Min. Value	Max. Value	100 percentile concentration limit	Exceedance (years / no) *
Nitrogen Oxides	milligrams per cubic metre	Annually	3	20.00	26.00	100	no
Volatile Organic Compounds	milligrams per cubic metre	Annually	1	2.20	2.20	20	no
<b>Comment:</b>							

**No Pollutant Limit Exists:**

Pollutant	Units of Measure	Monitoring frequency required by licence	No. of times measured during the year	Min. Value	Mean Value	Medium Value	Max. Value
Velocity	metres per second	Annually	4	12.00	12.00	12.00	12.00
Volumetric flowrate	m3/s (0°C,101.3,dry)	Annually	4	23.00	23.00	23.00	23.00



**Point 3:**

Pollutant	Units of Measure	Monitoring frequency required by licence	No. of times measured during the year	Min. Value	Max. Value	100 percentile concentration limit	Exceedance (years / no) *
Volatile Organic Compounds	milligrams per cubic metre	Annually	1	5.70	5.70	20	no
<b>Comment:</b>							

**No Pollutant Limit Exists:**

Pollutant	Units of Measure	Monitoring frequency required by licence	No. of times measured during the year	Min. Value	Mean Value	Medium Value	Max. Value
Velocity	metres per second	Annually	1	11.00	11.00	11.00	11.00
Volumetric flowrate	m3/s (0°C,101.3,dry)	Annually	1	31.00	31.00	31.00	31.00



# Noise Monitoring Locations





Published: 02/06/2022

Licensee: BlueScope Steel Ltd

EPL No: 12495

**Table 3 Summary of LA1(1minute) Attended Noise Measurement Results L02**

Source Location	Start Time Start Date Duration	Distance to Source	Noise Level (dBA)		Source
			L <sub>Amax</sub>	L <sub>A1</sub>	
Loading Bay	11:57:40 19/05/2022 1 minute	190 m	73	59	Truck Horn before exiting Loading Bay.
	00:02:30 20/05/2022 1 minute	190 m	60	57	Loading Bay Roller Door closing. High frequency squealing during lowering.
Internal access road	00:28:30 20/05/2022 1 minute	7 m	81	80	Truck passby towards exit gate
	00:21:43 22/02/2021 1 minute	190 m	56	55	Truck entry and brake squeal at eastern warehouse entrance
	00:48:00 20/05/2022 1 minute	7 m	77	76	Truck passby towards exit gate
Paint Line	00:47:19 20/05/2022 1 minute	145 m	59	58	Coil impact noise within facility

**Table 4 Predicted Noise Levels - Nearest Sensitive Receivers**

Noise Descriptor <sup>1</sup>	EPL Criterion	Predicted Noise Level	Compliance
LAeq(15minute) - Daytime	35 dBA	30 dBA	Yes
LAeq(15minute) - Evening	35 dBA		Yes
LAeq(15minute) - Night-time	35 dBA		Yes
LA1(1minute) - Sleep Disturbance - Standard Operation	54 dBA	46 dBA (Truck Horn) 44 dBA (Typical)	Yes

Note 1: Daytime refers to 7:00 am to 6:00 pm Monday to Saturday and 8:00 am to 6:00 pm on Sundays and Public Holidays. Evening refers to 6:00 pm to 10:00 pm. Night-time refers to 10:00 pm to 7:00 am Monday to Saturday and 10:00 pm to 8:00 am on Sundays and Public Holidays.

The results in **Table 4** show that the noise emissions from the operation of the WSSC paint line are predicted to comply with the both the LAeq(15minute) criterion for each assessment period and the sleep disturbance criterion for all noise events.