



BlueScope Steel (AIS) Pty Ltd
ABN 19 000 019625
Port Kembla Steelworks
Five Islands Road
Port Kembla 2505
PO Box 1854
Wollongong NSW 2500

BLUESCOPE STEEL (AIS) PTY. LTD.
Port Kembla Steelworks
Licence 6092

[Link to Environment Protection Licence EPL6092](#)

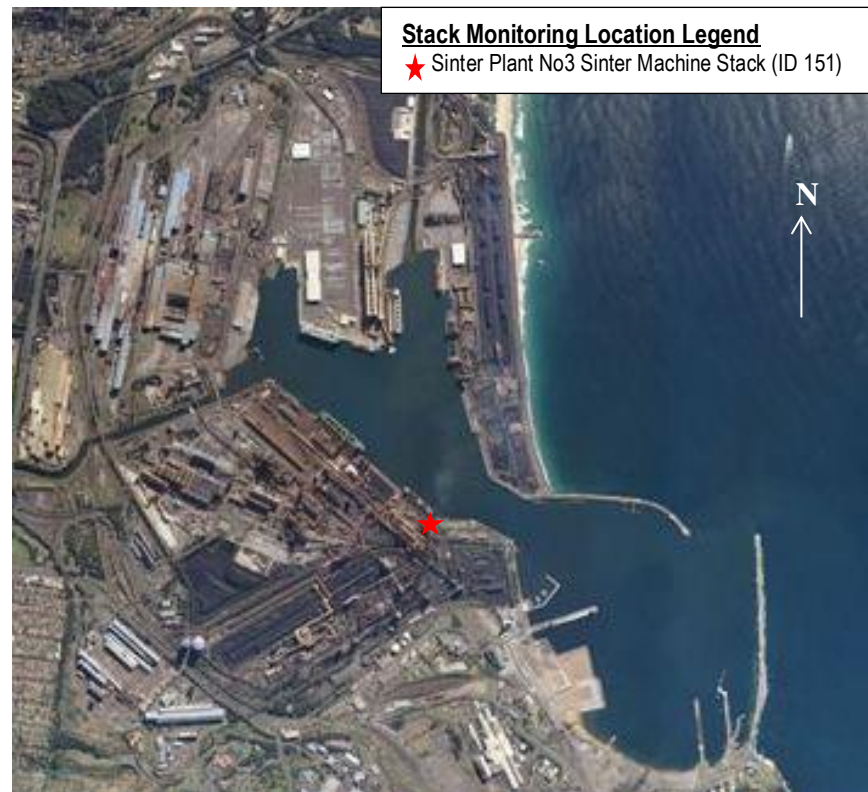
SINTER MACHINE INTERIM
OPERATIONAL ARRANGEMENTS
AIR QUALITY DATA

for

18 February to 02 May 2020



Stack Air Monitoring Requirements EPL Condition E5.6





Point 151 (3A Side):

Pollutant	Units of Measure	Monitoring frequency required by licence	No. of times measured	Min. Value	Mean Value	Max. Value	100 Percentile Limit	Exceedance (yes/no)
Carbon dioxide	percent	Weekly	118	6.1	7.5	8.8	-	-
Dioxins & Furans	nanograms per cubic metre	Weekly	14	0.11	0.3	0.52	0.3	Yes*
Dry Gas Density	kilograms per cubic metre	Daily during testing	180	1.33	1.34	1.35	-	-
Flow	cubic metres per second	Daily during testing	180	180	257	420	-	-
Hydrogen Chloride	milligrams per cubic metre	Weekly	9	30	35	40	-	-
Hydrogen Fluoride	milligrams per cubic metre	Weekly	9	2.8	3.5	4.8	-	-
Moisture content	percent	Daily during testing	180	1	11	14	-	-
Molecular weight of stack gas	grams per gram mole	Daily during testing	180	29.8	30.0	30.3	-	-
Nitrogen Oxides	milligrams per cubic metre	Weekly	89	301	343	399	2000	No
Oxygen	percent	Daily during testing	120	14	15	16	-	-
Solid Particles	milligrams per cubic metre	Weekly	14	1.5	4.5	11	20	No



Pollutant	Units of Measure	Monitoring frequency required by licence	No. of times measured	Min. Value	Mean Value	Max. Value	100 Percentile Limit	Exceedance (yes/no) *
Sulphuric acid mist and sulphur trioxide (SO ₃)	milligrams per cubic metre	Weekly	12	3.8	42	80	100	No
Sulphur dioxide	milligrams per cubic metre	Weekly	92	274	366	500	1000	No
Temperature	degrees Celsius	Daily during testing	180	155	172	187	-	-
Velocity	metres per second	Daily during testing	180	11	15	24	-	-
Volumetric flowrate	cubic metres per second	Daily during testing	180	180	257	420	-	-
Type 1 Substances	milligrams per cubic metre	Weekly	9	0.014	0.061	0.13	-	-
Type 2 Substances	milligrams per cubic metre	Weekly	9	0.003	0.027	0.046	-	-

Note: **Type 1 Substance** means the elements antimony, arsenic, cadmium, lead or mercury or any compound containing one or more of those elements.

Type 2 Substance means the elements beryllium, chromium, cobalt, manganese, nickel, selenium, tin or vanadium or any compound containing one or more of those elements.

*6 exceedances recorded. Refer to [BlueScope in the Illawarra website](#) for action taken.



Point 151 (3B Side):

Pollutant	Units of Measure	Monitoring frequency required by licence	No. of times measured	Min. Value	Mean Value	Max. Value	100 Percentile Limit	Exceedance (yes/no) *
Solid Particles	milligrams per cubic metre	Weekly	9	2.9	6.4	13	20	No

Point 151 (Continuous Process Monitoring – 3A Side):

Variable	Units of Measure	Monitoring frequency required by licence	No. of times measured	Min. Value	Mean Value	Max Value
Solid Particles (Indicative Only)	milligrams per cubic meter	Continuous	Continuous	5	11	25

Point 151 (Continuous Process Monitoring – 3B Side):

Variable	Units of Measure	Monitoring frequency required by licence	No. of times measured	Min. Value	Mean Value	Max Value
Solid Particles (Indicative Only)	milligrams per cubic meter	Continuous	Continuous	1	8	28



Ambient Air Monitoring Requirements EPL Condition E5.9





Online monitoring data at Point 141 and 152 can be found at the follow link:

<https://piinthesky.gtsgroup.com.au/Bluescope>