



Bluescope Steel Pty Ltd  
ABN 16 000 11 058  
Templar Road  
PO Box 3003  
St Marys South NSW 2760

**BLUESCOPE STEEL LIMITED.**  
**Western Sydney Service Centre**  
**Licence 12495**

[Link to Environment Protection Licence 12495](#)

**LICENCE MONITORING DATA**  
**ANNUAL SUMMARY REPORT**

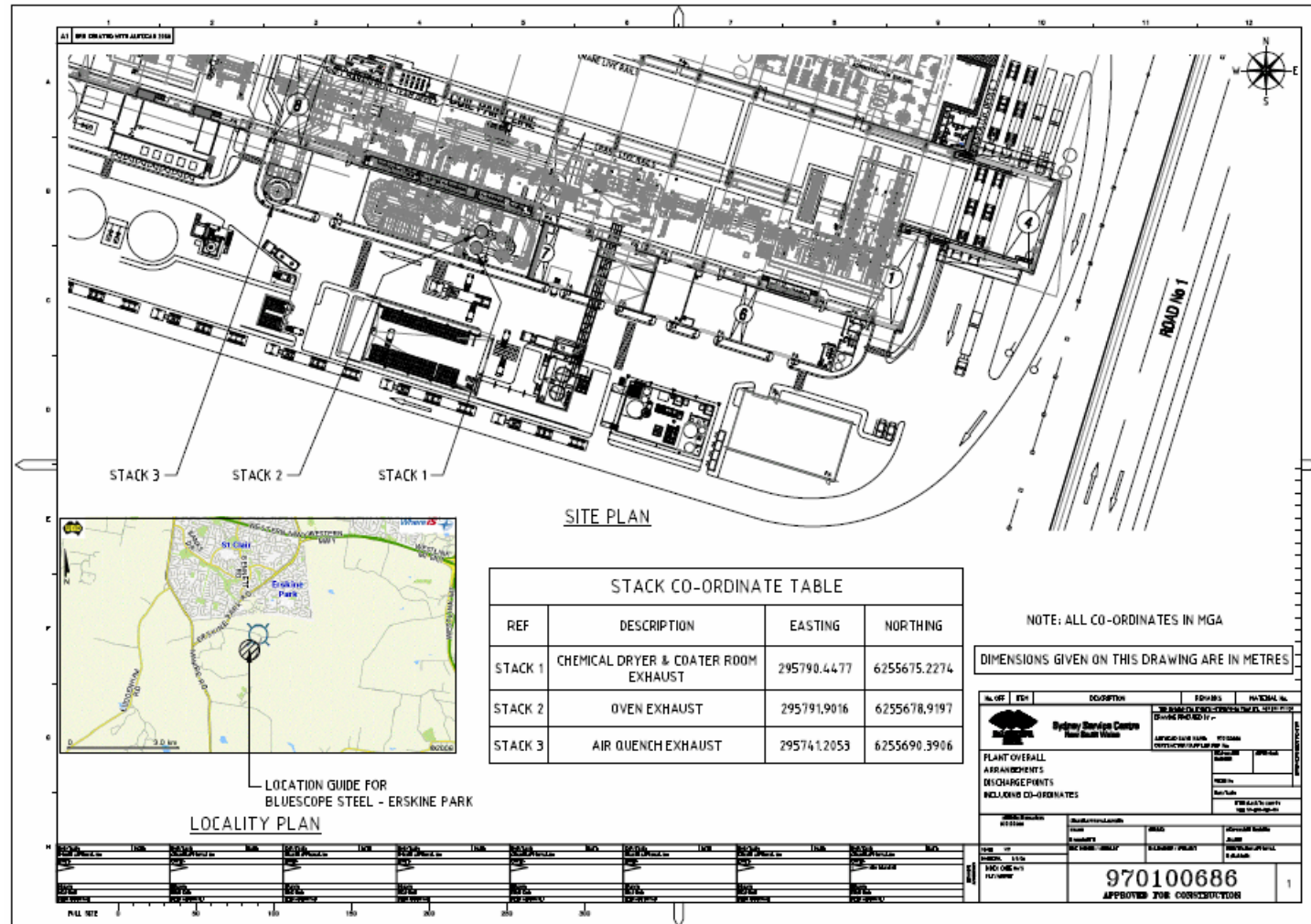
Period

**9 Jun 2019 to 8 Jun 2020**

Annual (Jun 2019 - Jun 2020) Report Published: 21, May, 2020

## Location of monitoring/discharge points and areas.

### EPL12495 Conditions P1





## Stack Air Monitoring Requirements

EPL12495 Conditions L 2.4, M 2.1.

### Point 1:

Pollutant	Units of Measure	Monitoring frequency required by licence	No. of times measured during the year	Min. Value	Max. Value	100 percentile concentration limit	Exceedance (yes / no) *
Volatile Organic Compounds	milligrams per cubic metre	Annually	2	5.5	6.8	20	no

Comment:

### No Pollutant Limit Exists:

Pollutant	Units of Measure	Monitoring frequency required by licence	No. of times measured during the year	Min. Value	Mean Value	Medium Value	Max. Value
Velocity	metres per second	Annually	2	14	14	14	14
Volumetric flowrate	m <sup>3</sup> /s (0°C,101.3,dry)	Annually	2	23	23	23	23



**Point 2:**

Pollutant	Units of Measure	Monitoring frequency required by licence	No. of times measured during the year	Min. Value	Max. Value	100 percentile concentration limit	Exceedance (yes / no) *
Nitrogen Oxides	milligrams per cubic metre	Annually	4	11	23	100	no
Volatile Organic Compounds	milligrams per cubic metre	Annually	2	0.20	0.26	20	no
<b>Comment:</b>							

**No Pollutant Limit Exists:**

Pollutant	Units of Measure	Monitoring frequency required by licence	No. of times measured during the year	Min. Value	Mean Value	Medium Value	Max. Value
Velocity	metres per second	Annually	6	12	12	12	12
Volumetric flowrate	m3/s (0°C,101.3,dry)	Annually	6	20	20	20	20



**Point 3:**

Pollutant	Units of Measure	Monitoring frequency required by licence	No. of times measured during the year	Min. Value	Max. Value	100 percentile concentration limit	Exceedance (yes / no) *
Volatile Organic Compounds	milligrams per cubic metre	Annually	2	1.4	4.1	20	no

**Comment:**

**No Pollutant Limit Exists:**

Pollutant	Units of Measure	Monitoring frequency required by licence	No. of times measured during the year	Min. Value	Mean Value	Medium Value	Max. Value
Velocity	metres per second	Annually	2	8.3	8.3	8.3	8.3
Volumetric flowrate	m3/s (0°C,101.3,dry)	Annually	2	22	22	22	22



**Published:** 12/02/2020

**Licensee:** BlueScope Steel Ltd

**EPL No:** 12495

**Table 2 Summary of LA1(1minute) Attended Noise Measurement Results**

Location	Start Time Start Date Duration	Distance to Source	Noise Level (dBA)		Description of Noise Emission and Typical L <sub>Amax</sub> (event) (dBA)
			L <sub>Amax</sub>	L <sub>A1</sub>	
Heavy vehicle entry gate	00:04:04 06/02/2020 1 minute	123 m	<45	<45	Gate siren Sirens barely audible
Light vehicle entry gate	00:01:36 06/02/2020 1 minute	104 m	48	48	Gate siren Sirens audible
Light vehicle exit gate	00:05:26 06/02/2020 1 minute	100 m	<45	<45	Gate siren Sirens clearly audible
Heavy vehicle exit gate	00:02:35 06/02/2020 1 minute	93 m	50	50	Gate siren Sirens clearly audible
Facility door 1 and 2	00:07:19 06/02/2020 1 minute	170 m	54	54	Doors open/close Screeching clearly audible
Facility door 3	00:18:30 06/02/2020 1 minute	215 m	61	61	Doors open/close Screeching clearly audible
Delivery truck passby	00:16:57 06/02/2020 1 minute	7 m	74	73	Engine/exhaust noise Pneumatic brake release at exit gate Includes exit gate siren
Facility Crane & Dropping of Materials	00:07:19 06/02/2020 1 minute	145 m	58	58	Dropping of coils within WSSC Noise levels range from 50 to 58



**Table 3 Predicted Noise Levels - Nearest Sensitive Receivers**

Noise Descriptor <sup>1</sup>	Criterion Level	Predicted Noise Level	Compliance
LAeq(15minute) - Daytime	35 dBA	29 dBA	Yes
LAeq(15minute) - Evening	35 dBA	29 dBA	Yes
LAeq(15minute) - Night-time	35 dBA	29 dBA	Yes
LA1(1minute) - Sleep Disturbance - Standard Operation	54 dBA	44 dBA	Yes

Note 1: Daytime refers to 7.00 am to 6.00 pm Monday to Saturday and 8.00 am to 6.00 pm on Sundays and Public Holidays. Evening refers to 6.00 pm to 10.00 pm. Night-time refers to 10.00 pm to 7.00 am Monday to Saturday and 10.00 pm to 8.00 am on Sundays and Public Holidays.

The results provided in **Table 3** show that the noise emissions resulting from the operation of the WSSC paint line comply with the intrusive LAeq(15minute) criterion for each assessment period.

The results provided in **Table 3** indicate that the WSSC paint line complies with the sleep disturbance criterion for all noise events outlined in **Table 2**.