



Bluescope Steel Pty Ltd
ABN 16 000 11 058
Templar Road
PO Box 1854
Erskine Park NSW 2759

BLUESCOPE STEEL LIMITED.
Western Sydney Service Centre
Licence 12495

[Link to Environment Protection Licence 12495](#)

LICENCE MONITORING DATA
ANNUAL SUMMARY REPORT

Period

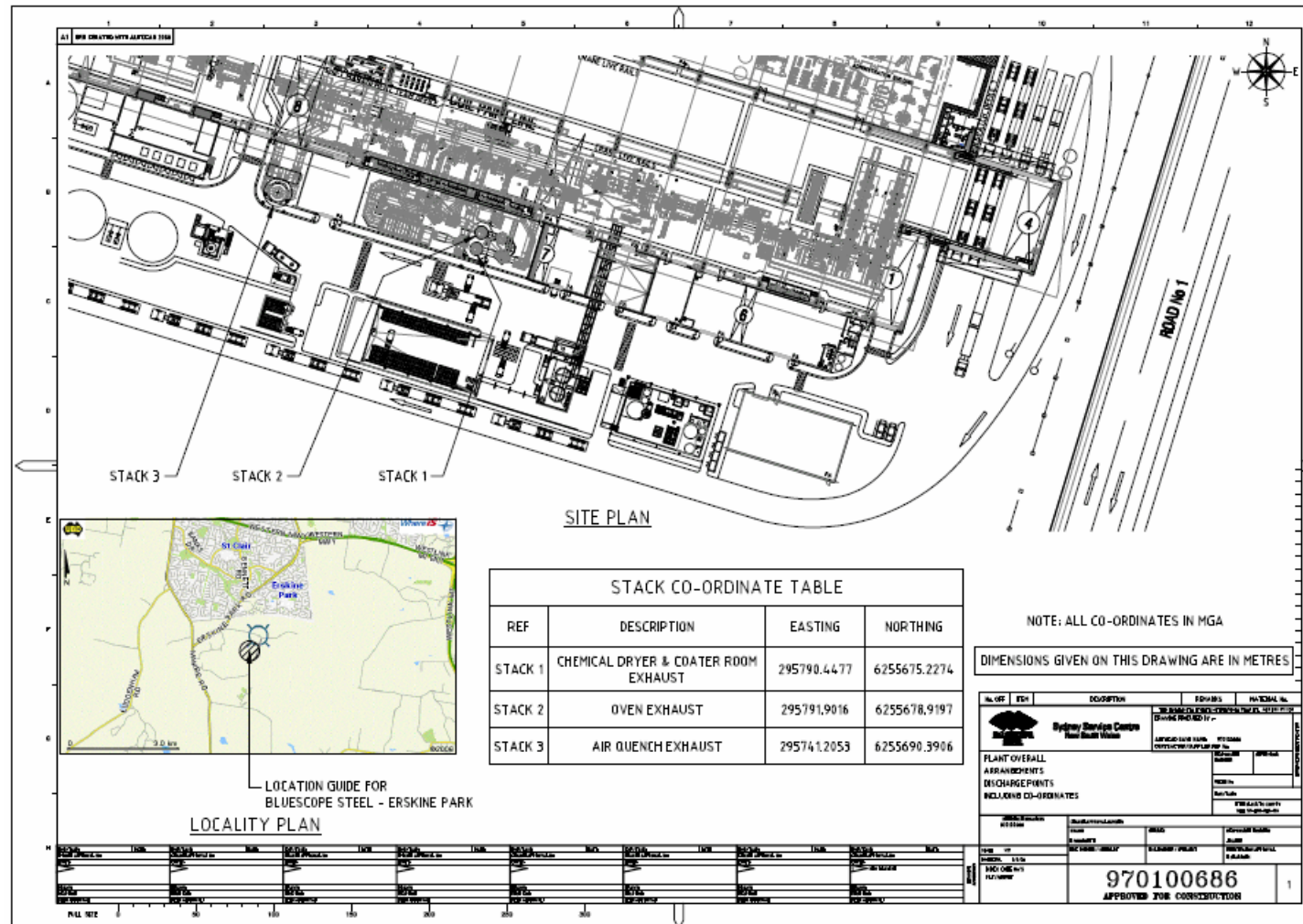
9 Jun 2017 to 8 Jun 2018

Annual (Jun 2017 - Jun 2018) Report Published: 8, May, 2018



Location of monitoring/discharge points and areas.

EPL12495 Conditions P1





Stack Air Monitoring Requirements

EPL12495 Conditions L 2.4, M 2.1.

Point 1:

| Pollutant | Units of Measure | Monitoring frequency required by licence | No. of times measured during the year | Min. Value | Max. Value | 100 percentile concentration limit | Exceedance (yes / no) * |
|----------------------------|----------------------------|--|---------------------------------------|------------|------------|------------------------------------|-------------------------|
| Volatile Organic Compounds | milligrams per cubic metre | Annually | 1 | 16.00 | 16.00 | 20 | no |

Comment:

No Pollutant Limit Exists:

| Pollutant | Units of Measure | Monitoring frequency required by licence | No. of times measured during the year | Min. Value | Mean Value | Medium Value | Max. Value |
|---------------------|----------------------|--|---------------------------------------|------------|------------|--------------|------------|
| Velocity | metres per second | Annually | 1 | 14.00 | 14.00 | 14.00 | 14.00 |
| Volumetric flowrate | m3/s (0°C,101.3,dry) | Annually | 1 | 23.00 | 23.00 | 23.00 | 23.00 |



Point 2:

| Pollutant | Units of Measure | Monitoring frequency required by licence | No. of times measured during the year | Min. Value | Max. Value | 100 percentile concentration limit | Exceedance (yes / no) * |
|----------------------------|----------------------------|--|---------------------------------------|------------|------------|------------------------------------|-------------------------|
| Nitrogen Oxides | milligrams per cubic metre | Annually | 4 | 22.00 | 28.00 | 100 | no |
| Volatile Organic Compounds | milligrams per cubic metre | Annually | 1 | 3.50 | 3.50 | 20 | no |
| Comment: | | | | | | | |

No Pollutant Limit Exists:

| Pollutant | Units of Measure | Monitoring frequency required by licence | No. of times measured during the year | Min. Value | Mean Value | Medium Value | Max. Value |
|---------------------|----------------------|--|---------------------------------------|------------|------------|--------------|------------|
| Velocity | metres per second | Annually | 5 | 13.00 | 13.00 | 13.00 | 13.00 |
| Volumetric flowrate | m3/s (0°C,101.3,dry) | Annually | 5 | 23.00 | 23.00 | 23.00 | 23.00 |



Point 3:

| Pollutant | Units of Measure | Monitoring frequency required by licence | No. of times measured during the year | Min. Value | Max. Value | 100 percentile concentration limit | Exceedance (yes / no) * |
|----------------------------|----------------------------|--|---------------------------------------|------------|------------|------------------------------------|-------------------------|
| Volatile Organic Compounds | milligrams per cubic metre | Annually | 1 | 0.68 | 0.68 | 20 | no |

Comment:

No Pollutant Limit Exists:

| Pollutant | Units of Measure | Monitoring frequency required by licence | No. of times measured during the year | Min. Value | Mean Value | Medium Value | Max. Value |
|---------------------|----------------------|--|---------------------------------------|------------|------------|--------------|------------|
| Velocity | metres per second | Annually | 1 | 9.20 | 9.20 | 9.20 | 9.20 |
| Volumetric flowrate | m3/s (0°C,101.3,dry) | Annually | 1 | 26.00 | 26.00 | 26.00 | 26.00 |

| Published: 09/10/2017 | | | | | | | | | |
|---|------------|------------|--------|-------------------|------------------|--|---|---|--|
| Licensee: BlueScope Steel Ltd | | | | | | | | | |
| EPL No: 12495 | | | | | | | | | |
| Measurements undertaken in accordance with NSW Industrial Noise Policy and Australian Standard AS 1055.1-1997 | | | | | | | | | |
| Location | Date | Start Time | Period | Measured Levels | | Limits | Weather | Observations | Potential Non-Compliance |
| | | | | L _{Amax} | L _{Aeq} | | | | |
| 1 | 25/09/2017 | 22:15:55 | 15 min | 62 | 42 | LA _{eq} (15min): 35 dBA LA ₁ (1min): 54 dBA | Cloud: 0/8 Wind: Ave=0.0 Gust=1.0 Dir=SE Hum: 32% Temp: 16.3 | Distant traffic: Light tyres: 38-40 Light engines: 41 Heavy: 41-48 Residence door close: 54, 62 Local traffic: 49-59 Dog barking: 40-43 Police/Ambulance siren: 50 | WSSC inaudible at measurement location. |
| 1 | 25/09/2017 | 22:42:33 | 15 min | 54 | 38 | LA _{eq} (15min): 35 dBA LA ₁ (1min): 54 dBA | Cloud: 0/8 Wind: Ave=0.0 Gust=1.5 Dir=SE Hum: 48% Temp: 14.6 | Distant traffic: Light tyres: 36-38 Light engines: 38-40 Heavy: 41-48 Residence door close: 54 Insects audible | WSSC inaudible at measurement location. |
| 2 | 26/09/2017 | 00:16:33 | 15 min | 60 | 49 | LA _{eq} (15min): 35 dBA LA ₁ (1min): 54 dBA | Cloud: 0/8 Wind: Ave=0.0 Gust=0.5 Dir=SSW Hum: 54% Temp: 12.0 | Birds: 52-55 Light Traffic: Erskine Park Rd: 45-47 Heavy Traffic: Templar Rd: 50-60 Facility over Templar Rd: 50-52 Neighbour facility security vehicle: 58 WSSC Plant: (Drop coil): 50 | Measurement at site boundary. Noise limits not applicable to measured levels at this location. |
| 2 | 26/09/2017 | 00:47:14 | 15 min | 61 | 47 | LA _{eq} (15min): 35 dBA LA ₁ (1min): 54 dBA | Cloud: 0/8 Wind: Ave=0.0 Gust=1.0 Dir=SW Hum: 64% Temp: 8.8 | Birds: 48-61 Light Traffic: Erskine Park Rd: 45-47 Heavy Traffic: Templar Rd: 50-60 Facility over Templar Rd: 50 WSSC Plant: (truck arrival): 50 | Measurement at site boundary. Noise limits not applicable to measured levels at this location. |

Table 3 Predicted Noise Levels - Nearest Sensitive Receivers

| Noise Descriptor ¹ | Criterion Level | Predicted Noise Level | Compliance |
|--|-----------------|--|------------|
| LA _{eq} (15minute) - Daytime | 35 dBA | 27 dBA | Yes |
| LA _{eq} (15minute) - Evening | 35 dBA | 27 dBA | Yes |
| LA _{eq} (15minute) - Night-time | 35 dBA | 27 dBA | Yes |
| LA ₁ (1minute) - Sleep Disturbance - Standard Operation | 54 dBA | 42 dBA (truck horn) 35 dBA (no horns) | Yes Yes |

Note 1: Daytime refers to 7.00 am to 6.00 pm Monday to Saturday and 8.00 am to 6.00 pm on Sundays and Public Holidays. Evening refers to 6.00 pm to 10.00 pm. Night-time refers to 10.00 pm to 7.00 am Monday to Saturday and 10.00 pm to 8.00 am on Sundays and Public Holidays.

The results provided in **Table 3** show that the noise emissions resulting from the operation of the WSSC paint line comply with the intrusive LA_{eq}(15minute) criterion for each assessment period.

The results provided in **Table 3** indicate that the WSSC paint line complies with the sleep disturbance criterion for all noise events outlined in **Table 2**.