



Bluescope Steel Pty Ltd
ABN 16 000 11 058
Templar Road
PO Box 1854
Erskine Park NSW 2759

BLUESCOPE STEEL LIMITED.
Western Sydney Service Centre
Licence 12495

[Link to Environment Protection Licence 12495](#)

LICENCE MONITORING DATA
ANNUAL SUMMARY REPORT

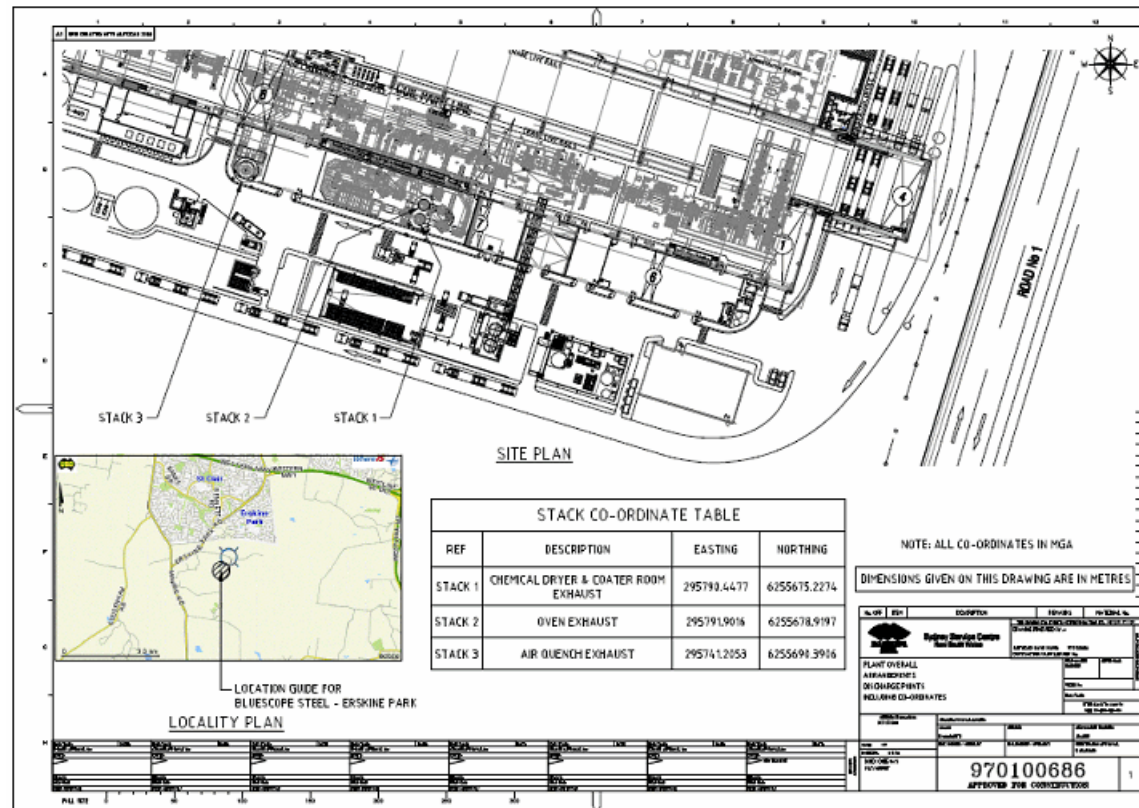
Period

9 Jun 2016 to 8 Jun 2017

Annual (Jun 2016 - Jun 2017) Report Published: 20, June, 2017



Location of monitoring/discharge points and areas. EPL12495 Conditions P1





Stack Air Monitoring Requirements

EPL12495 Conditions L 2.1, M 2.1.

Point 1:

Pollutant	Units of Measure	Monitoring frequency required by licence	No. of times measured during the year	Min. Value	Max. Value	100 percentile concentration limit	Exceedance (yes / no) *
Volatile Organic Compounds	milligrams per cubic metre	Annually	1	12.00	12.00	20	no
Comment:							

No Pollutant Limit Exists:

Pollutant	Units of Measure	Monitoring frequency required by licence	No. of times measured during the year	Min. Value	Mean Value	Medium Value	Max. Value
Velocity	metres per second	Annually	1	15.00	15.00	15.00	15.00
Volumetric flowrate	m3/s (0°C,101.3,dry)	Annually	1	24.00	24.00	24.00	24.00



Point 2:

Pollutant	Units of Measure	Monitoring frequency required by licence	No. of times measured during the year	Min. Value	Max. Value	100 percentile concentration limit	Exceedance (yes / no) *
Nitrogen Oxides	milligrams per cubic metre	Annually	4	28.00	32.00	100	no
Volatile Organic Compounds	milligrams per cubic metre	Annually	1	1.70	1.70	20	no
Comment:							

No Pollutant Limit Exists:

Pollutant	Units of Measure	Monitoring frequency required by licence	No. of times measured during the year	Min. Value	Mean Value	Medium Value	Max. Value
Velocity	metres per second	Annually	5	17.00	17.00	17.00	17.00
Volumetric flowrate	m3/s (0°C,101.3,dry)	Annually	5	27.00	27.00	27.00	27.00



Point 3:

Pollutant	Units of Measure	Monitoring frequency required by licence	No. of times measured during the year	Min. Value	Max. Value	100 percentile concentration limit	Exceedance (yes / no) *
Volatile Organic Compounds	milligrams per cubic metre	Annually	1	0.67	0.67	20	no

Comment:

No Pollutant Limit Exists:

Pollutant	Units of Measure	Monitoring frequency required by licence	No. of times measured during the year	Min. Value	Mean Value	Medium Value	Max. Value
Velocity	metres per second	Annually	1	7.40	7.40	7.40	7.40
Volumetric flowrate	m3/s (0°C,101.3,dry)	Annually	1	13.00	13.00	13.00	13.00

Published: 18/05/2017									
Licensee: BlueScope Steel Ltd									
EPL No: 12495									
Measurements undertaken in accordance with NSW Industrial Noise Policy and Australian Standard AS 1055.1-1997									
Location	Date	Start Time	Period	Measured Levels		Limits	Weather	Observations	Potential Non-Compliance
				LAmx	LAeq				
1	16/05/2017	22:07:00	15 min	58	43	LAeq (15min): 35 dBA LA1 (1min): 54 dBA	Cloud: 0/8 Wind: Ave=0.0 Gust=1.0 Dir=SE Hum: 76% Temp: 11.9	Distant traffic: (Light tyres): 40-45 (Light engines): 45 (Heavy): 47-52 Local traffic: 48-58 Air traffic: 55 Dog bark: 46-51 Distant truck pneumatics: 42-45	WSSC inaudible at measurement location.
1	16/05/2017	22:22:35	15 min	62	44	LAeq (15min): 35 dBA LA1 (1min): 54 dBA	Cloud: 0/8 Wind: Ave=0.0 Gust=0.7 Dir=SE Hum: 80% Temp: 11.6	Distant traffic: (Light tyres): 40-44 (Light engines): 44 (Heavy): 47-50 Motorcycles: 46-62 Local traffic: 48 Dog bark: 42-53 Distant reverse alarm: 40	WSSC inaudible at measurement location.
2	16/05/2017	23:49:56	15 min	57	50	LAeq (15min): 35 dBA LA1 (1min): 54 dBA	Cloud: 0/8 Wind: Ave=0.0 Gust=0.5 Dir=SSW Hum: 89% Temp: 10.2	Birds: 51 Local Traffic: 54-57 WSSC Plant: (Drop coil): 53 (Internal alarm): 47	Measurement at site boundary. Noise limits not applicable to measured levels at this location.
2	17/05/2017	00:06:34	15 min	58	51	LAeq (15min): 35 dBA LA1 (1min): 54 dBA	Cloud: 0/8 Wind: Ave=0.0 Gust=1.0 Dir=SW Hum: 90% Temp: 10.2	Local Traffic: 55-58 WSSC Plant: (Drop coil): 51-52 (Material handling): 51-52 (Truck pneumatics): 53-54 (Truck Horn): 53 (toot)	Measurement at site boundary. Noise limits not applicable to measured levels at this location.
2	17/05/2017	00:24:12	15 min	65	51	LAeq (15min): 35 dBA LA1 (1min): 54 dBA	Cloud: 0/8 Wind: Ave=0.0 Gust=0.7 Dir=SW Hum: 92% Temp: 9.9	Birds: 58 Local Traffic: 53-58 WSSC Plant: (Drop coil): 53-54 (Material handling): 51-53 (Truck arrival): 65 (Truck pneumatics): 53-54 (Truck Horn): 65 (toot)	Measurement at site boundary. Noise limits not applicable to measured levels at this location.



Table 3 Predicted Noise Levels - Nearest Sensitive Receivers

Noise Descriptor ¹	Criterion Level	Predicted Noise Level	Compliance
LAeq(15minute) - Daytime	35 dBA	27 dBA	Yes
LAeq(15minute) - Evening	35 dBA	27 dBA	Yes
LAeq(15minute) - Night-time	35 dBA	27 dBA	Yes
LA1(1minute) - Sleep Disturbance	54 dBA	42 dBA (truck horn)	Yes
- Standard Operation		35 dBA (no horns)	Yes

Note 1: Daytime refers to 7.00 am to 6.00 pm Monday to Saturday and 8.00 am to 6.00 pm on Sundays and Public Holidays. Evening refers to 6.00 pm to 10.00 pm. Night-time refers to 10.00 pm to 7.00 am Monday to Saturday and 10.00 pm to 8.00 am on Sundays and Public Holidays.

The results provided in **Table 3** show that the noise emissions resulting from the operation of the WSSC paint line comply with the intrusive LAeq(15minute) criterion for each assessment period.

The results provided in **Table 3** indicate that the WSSC paint line complies with the sleep disturbance criterion for all noise events outlined in **Table 2**.

