



Bluescope Steel Pty Ltd
ABN 16 000 11 058
Templar Road
PO Box 1854
Erskine Park NSW 2759

**BLUESCOPE STEEL LIMITED.
Western Sydney Service Centre
Licence 12495**

[Link to Environment Protection Licence 12495](#)

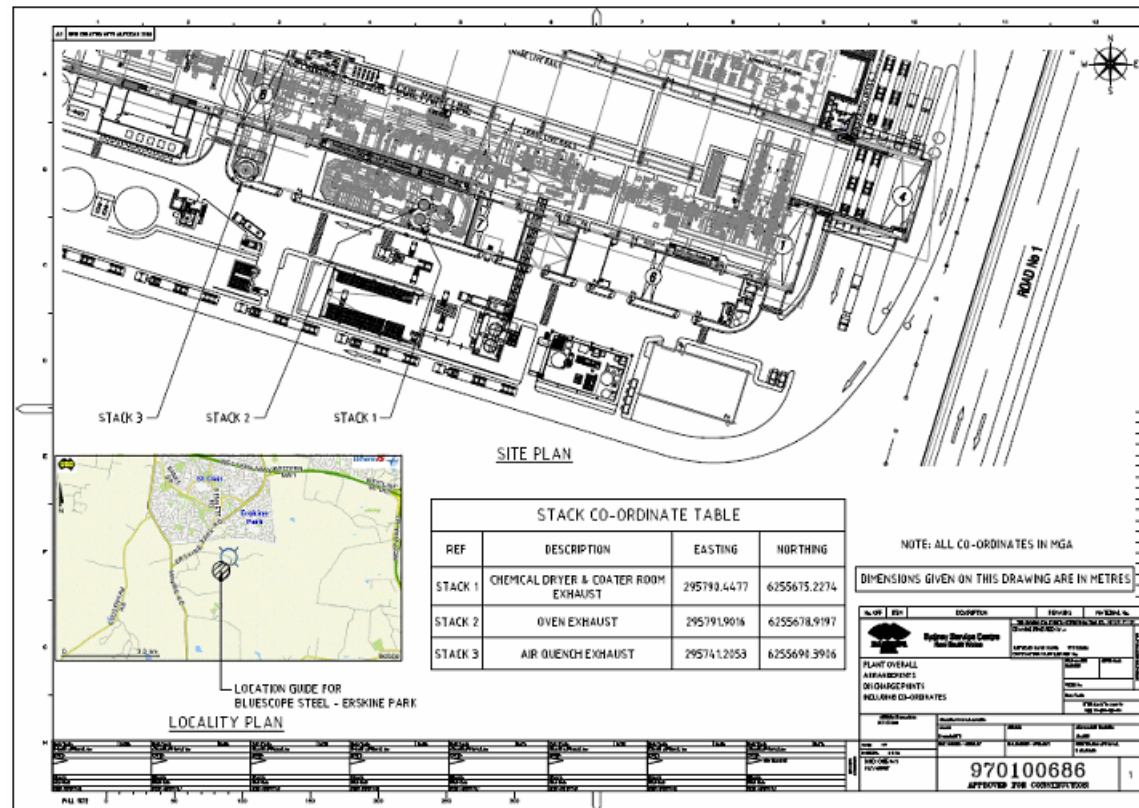
**LICENCE MONITORING DATA
ANNUAL SUMMARY REPORT**

Period

9 Jun 2015 to 8 Jun 2016

Annual (Jun 2015 - Jun 2016) Report Published: 30, March, 2016

Location of monitoring/discharge points and areas. EPL12495 Conditions P1





Stack Air Monitoring Requirements

EPL12495 Conditions L 2.3, M 2.2

Point 1:

Pollutant	Units of Measure	Monitoring frequency required by licence	No. of times measured during the year	Min. Value	Max. Value	100 percentile concentration limit	Exceedance (yes / no) *
Volatile Organic Compounds	milligrams per cubic metre	Annually	1	9.30	9.30	20	no
Comment:							

No Pollutant Limit Exists:

Pollutant	Units of Measure	Monitoring frequency required by licence	No. of times measured during the year	Min. Value	Mean Value	Medium Value	Max. Value
Velocity	metres per second	Annually	1	13.00	13.00	13.00	13.00
Volumetric flowrate	m3/s (0°C,101.3,dry)	Annually	1	22.00	22.00	22.00	22.00



Point 2:

Pollutant	Units of Measure	Monitoring frequency required by licence	No. of times measured during the year	Min. Value	Max. Value	100 percentile concentration limit	Exceedance (yes / no) *
Nitrogen Oxides	milligrams per cubic metre	Annually	4	23.00	34.00	100	no
Volatile Organic Compounds	milligrams per cubic metre	Annually	1	1.20	1.20	20	no
Comment:							

No Pollutant Limit Exists:

Pollutant	Units of Measure	Monitoring frequency required by licence	No. of times measured during the year	Min. Value	Mean Value	Medium Value	Max. Value
Velocity	metres per second	Annually	5	11.00	11.00	11.00	11.00
Volumetric flowrate	m3/s (0°C,101.3,dry)	Annually	5	20.00	20.00	20.00	20.00



Point 3:

Pollutant	Units of Measure	Monitoring frequency required by licence	No. of times measured during the year	Min. Value	Max. Value	100 percentile concentration limit	Exceedance (yes / no) *
Volatile Organic Compounds	milligrams per cubic metre	Annually	1	0.77	0.77	20	no

Comment:

No Pollutant Limit Exists:

Pollutant	Units of Measure	Monitoring frequency required by licence	No. of times measured during the year	Min. Value	Mean Value	Medium Value	Max. Value
Velocity	metres per second	Annually	1	9.80	9.80	9.80	9.80
Volumetric flowrate	m3/s (0°C,101.3,dry)	Annually	1	28.00	28.00	28.00	28.00

Published: 30/11/2015

Licensee: BlueScope Steel Ltd

EPL No: 12495

Measurements undertaken in accordance with NSW Industrial Noise Policy and Australian Standard AS 1055.1-1997

Location	Date	Start Time	Period	Measured Levels		Limits	Weather	Observations	Potential Non-Compliance
				L _{Amax}	L _{Aeq}				
1	16/11/2015	22:48:33	15 min	55	47	L _{Aeq} (15min): 35 dBA LA1 (1min): 47 dBA	Cloud: 2/8 Wind: Ave=0.0 Gust=0.0 Dir=n/a Pressure: 1024 Hum: 70% Temp: 16.7	Distant Traffic: (Tyres): 45-50 (Heavy): 50 Local traffic: 50-56 Insects: 52-55 Dog bark: <40-52 Distant truck horn: 44	WSSC inaudible at measurement location.
2	17/11/2015	00:23:13	15 min	66	50	L _{Aeq} (15min): 35 dBA LA1 (1min): 47 dBA	Cloud: 3/8 Wind: Ave=0.0 Gust=0.0 Dir=n/a Pressure: 1024 Hum: 83% Temp: 14.5	Birds: 45-50 Insects: 47-52 WSSC Plant: (Drop coil): 52-59 (Reverse alarm): 45-52 (Forklift horn): 56-66	Measurement at site boundary. Noise limits not applicable to measured levels at this location.
2	17/11/2015	00:41:32	15 min	55	49	L _{Aeq} (15min): 35 dBA LA1 (1min): 47 dBA	Cloud: 6/8 Wind: Ave=0.0 Gust=0.0 Dir=n/a Pressure: 1024 Hum: 82% Temp: 14.4	Distant Traffic: Tyres: 40-49 Birds: 52 Insects: 47-52 WSSC Plant: (Drop coil): 53	Measurement at site boundary. Noise limits not applicable to measured levels at this location.
2	17/11/2015	00:56:55	15 min	60	49	L _{Aeq} (15min): 35 dBA LA1 (1min): 47 dBA	Cloud: 6/8 Wind: Ave=0.0 Gust=0.0 Dir=n/a Pressure: 1024 Hum: 82% Temp: 14.4	Birds: 50-53 Insects: 48 WSSC Plant: (Crane): 51 (Drop coil): 50-60	Measurement at site boundary. Noise limits not applicable to measured levels at this location.



Predicted Noise Levels - Nearest Sensitive Receivers

Noise Descriptor¹	Criterion Level	Predicted Noise Level	Compliance
L _{Aeq} (15minute) - Daytime	35 dBA	25 dBA	Yes
L _{Aeq} (15minute) - Evening	35 dBA	25 dBA	Yes
L _{Aeq} (15minute) - Night-time	35 dBA	25 dBA	Yes
LA ₁ (1minute) - Sleep Disturbance	47 dBA	56 dBA (truck horn) ²	No
- Standard Operation		49 dBA (forklift horn) ²	No
		33 dBA (no horns) ²	Yes

Note 1: Daytime refers to 7.00 am to 6.00 pm Monday to Saturday and 8.00 am to 6.00 pm on Sundays and Public Holidays. Evening refers to 6.00 pm to 10.00 pm. Night-time refers to 10.00 pm to 7.00 am Monday to Saturday and 10.00 pm to 8.00 am on Sundays and Public Holidays.

Note 2: Includes appropriate modifying factors as specified in the INP.

Comment: Monitoring indicates under normal operations noise limits are adhered to. This is the first instance of a noise related non-compliance at this site, in response BlueScope have initiated additional controls to prevent recurrence.