



Bluescope Steel Pty Ltd
ABN 16 000 11 058
Templar Road
PO Box 1854
Erskine Park NSW 2759

BLUESCOPE STEEL LIMITED.
Western Sydney Service Centre
Licence 12495

[Link to Environment Protection Licence 12495](#)

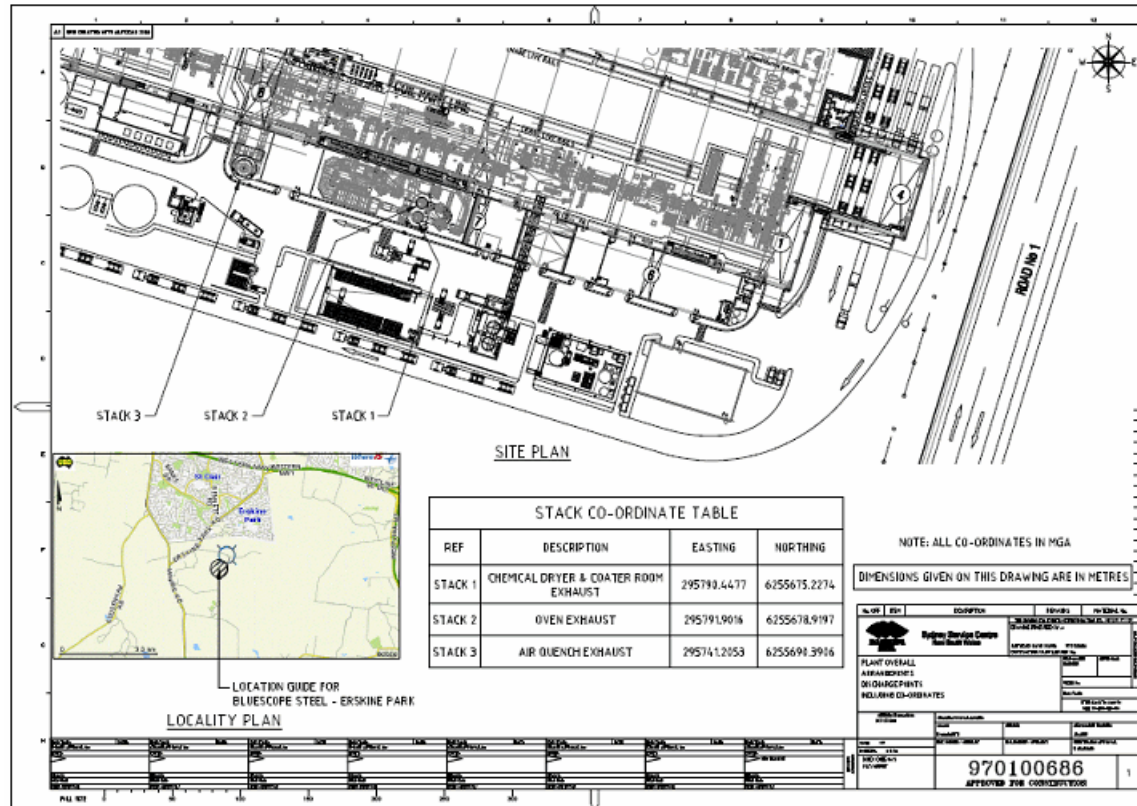
LICENCE MONITORING DATA
ANNUAL SUMMARY REPORT

Period

9 Jun 2014 to 8 Jun 2015

Annual (Jun 2014 - Jun 2015) Report Published: 21, April, 2015

Location of monitoring/discharge points and areas. EPL12495 Conditions P1





Stack Air Monitoring Requirements

EPL12495 Conditions L 2.4, M 2.1.

Point 1:

Pollutant	Units of Measure	Monitoring frequency required by licence	No. of times measured during the year	Min. Value	Max. Value	100 percentile concentration limit	Exceedance (yes / no) *
Volatile Organic Compounds	milligrams per cubic metre	Annually	2	13.00	15.00	20	no
Comment:							

No Pollutant Limit Exists:

Pollutant	Units of Measure	Monitoring frequency required by licence	No. of times measured during the year	Min. Value	Mean Value	Medium Value	Max. Value
Dry Gas Density	kilograms per cubic metre	Annually	6	1.29	1.29	1.29	1.29
Moisture	percent	Annually	6	1.10	1.10	1.10	1.10
Molecular Weight of stack gases	grams per gram mole	Annually	6	28.90	28.90	28.90	28.90
Oxygen (O ₂)	percent	Annually	4	21.00	21.00	21.00	21.00
Temperature	degrees Celcius	Annually	6	40.00	40.33	40.00	41.00
Velocity	metres per second	Annually	6	15.00	15.00	15.00	15.00
Volumetric flowrate	m ³ /s (0°C,101.3,dry)	Annually	6	24.00	24.33	24.00	25.00



Bluescope Steel Pty Ltd
ABN 16 000 11 058
Templar Road
PO Box 1854
Erskine Park NSW 2759

Point 2:

Pollutant	Units of Measure	Monitoring frequency required by licence	No. of times measured during the year	Min. Value	Max. Value	100 percentile concentration limit	Exceedance (yes / no) *
Nitrogen Oxides	milligrams per cubic metre	Annually	4	24.00	33.00	100	no
Type 1 and Type 2 substances in aggregate	milligrams per cubic metre	Annually	2	0.0140	0.0150	1	no
Volatile Organic Compounds	milligrams per cubic metre	Annually	2	1.30	1.40	20	no
Comment:							



No Pollutant Limit Exists:

Pollutant	Units of Measure	Monitoring frequency required by licence	No. of times measured during the year	Min. Value	Mean Value	Medium Value	Max. Value
Carbon Monoxide	milligrams per cubic metre	Annually	4	15.00	16.75	16.50	19.00
Dry Gas Density	kilograms per cubic metre	Annually	8	1.29	1.30	1.30	1.31
Moisture	percent	Annually	8	2.10	3.61	4.20	4.20
Molecular Weight of stack gases	grams per gram mole	Annually	8	29.00	29.04	29.00	29.30
Oxygen (O2)	percent	Annually	4	18.00	18.75	19.00	19.00
Temperature	degrees Celcius	Annually	8	224.00	239.88	248.00	248.00
Velocity	metres per second	Annually	8	9.00	10.51	11.00	11.00
Volumetric flowrate	m3/s (0°C,101.3,dry)	Annually	8	17.00	19.25	20.00	20.00



Point 3:

Pollutant	Units of Measure	Monitoring frequency required by licence	No. of times measured during the year	Min. Value	Max. Value	100 percentile concentration limit	Exceedance (yes / no) *
Volatile Organic Compounds	milligrams per cubic metre	Annually	2	1.10	1.30	20	no

Comment:

No Pollutant Limit Exists:

Pollutant	Units of Measure	Monitoring frequency required by licence	No. of times measured during the year	Min. Value	Mean Value	Medium Value	Max. Value
Dry Gas Density	kilograms per cubic metre	Annually	6	1.29	1.29	1.29	1.29
Moisture	percent	Annually	6	2.10	2.10	2.10	2.10
Molecular Weight of stack gases	grams per gram mole	Annually	6	28.90	28.90	28.90	28.90
Oxygen (O2)	percent	Annually	4	21.00	21.00	21.00	21.00
Temperature	degrees Celcius	Annually	6	27.00	30.33	31.00	31.00
Velocity	metres per second	Annually	6	7.00	8.08	8.30	8.30
Volumetric flowrate	m3/s (0°C,101.3,dry)	Annually	6	20.00	22.50	23.00	23.00



Noise Monitoring Requirements

EPL12495 Conditions L4

Location 1 - Nearest Residential Receiver Location 2 - Northern Site Boundary

Published: 24/10/2014									
Licensee: BlueScope Steel Ltd									
EPL No: 12495									
Measurements undertaken in accordance with NSW Industrial Noise Policy and Australian Standard AS 1055.1-1997									
Location	Date	Start Time	Period	Measured Levels		Limits	Weather	Observations	Potential Non-Compliance
				L _{Amax}	L _{Aeq}				
1	21/10/2014	23:05:20	15 min	49	39	L _{Aeq} (15m in): 35 dBA LA1(1 min): 47 dBA	Cloud: 8/8 Wind: Ave=0.0 Gust=0.0 Dir=n/a Pressure: 1024 Hum: 62% Temp: 16.1	Distant Traffic: (Tyres): 35 (Heavy): 40-45 Insects: 40-49	WSSC inaudible at measurement location.
1	21/10/2014	23:21:57	15 min	48	38	L _{Aeq} (15m in): 35 dBA LA1(1 min): 47 dBA	Cloud: 8/8 Wind: Ave=0.0 Gust=0.0 Dir=n/a Pressure: 1024 Hum: 61% Temp: 16.7	Distant Traffic: (Tyres): 30-34 (Heavy): 45 Dog Bark: 40-46 Insects: 40-48	WSSC inaudible at measurement location.
2	22/10/2014	00:36:43	15 min	63	44	L _{Aeq} (15m in): 35 dBA LA1(1 min): 47 dBA	Cloud: 8/8 Wind: Ave=1.0 Gust=2.1 Dir=NNE Pressure: 1024 Hum: 68% Temp: 15.7	Distant Traffic: (Tyres): 45 Frogs: 45 Insects: 45 WSSC Plant: (Truck Horn): 63 (Drop Coil): 45	Measurement at site boundary. Noise limits not applicable to measured levels at this location.
2	22/10/2014	00:57:15	15 min	47	44	L _{Aeq} (15m in): 35 dBA LA1(1 min): 47 dBA	Cloud: 8/8 Wind: Ave=1.0 Gust=2.0 Dir=NE Pressure: 1024 Hum: 69% Temp: 15.7	Distant Traffic: (Tyres): 40-45 Frogs: 46 Insects: 45 WSSC Plant: (Alarm): 44 (Drop Coil): 46-47 (Machinery): 45 (Sprinklers): 43	Measurement at site boundary. Noise limits not applicable to measured levels at this location.