



Bluescope Steel (AIS) Pty Ltd  
ABN 19 000 019625  
Port Kembla Steelworks  
Five Islands Road  
Port Kembla 2505  
PO Box 1854  
Wollongong NSW 2500

**BLUESCOPE STEEL (AIS) PTY. LTD.**  
**Port Kembla Steelworks**  
**Licence 6092**

[Link to Environment Protection Licence EPL6092](#)

**LICENCE MONITORING DATA**  
**MONTHLY SUMMARY REPORT**

for

**1 Oct 2014 to 31 Oct 2014**

Monthly (October 2014) Report Published: 2, December, 2014

## Stack Air Monitoring Requirements

EPL6092 Conditions M2.2/M2.3/M8.2/E1.4



**Point 107:**

Pollutant	Units of Measure	Monitoring frequency required by licence	No. of times measured during month	Min. Value	Max Value	100 Percentile Limit	Exceedance (yes / no) *
Dry Gas Density	Kilograms per cubic metre	Quarterly in duplicate	2	1.31	1.31		no
Fine Particulates	Milligrams per cubic metre	Quarterly in duplicate	1	2.70	2.70		no
Moisture	Percent	Quarterly in duplicate	2	11.00	11.00		no
Molecular Weight of stack gases	grams per gram mole	Quarterly in duplicate	2	29.30	29.30		no
Solid Particles	Milligrams per cubic metre	Quarterly in duplicate	1	9.00	9.00	20.00	no
Temperature	Degrees Celcius	Quarterly in duplicate	2	144.00	144.00		no
Velocity	Metres per second	Quarterly in duplicate	2	16.00	16.00		no
Volumetric flowrate	Cubic metres per second	Quarterly in duplicate	2	320.00	320.00		no
<b>Comment:</b>							

**O4.13**

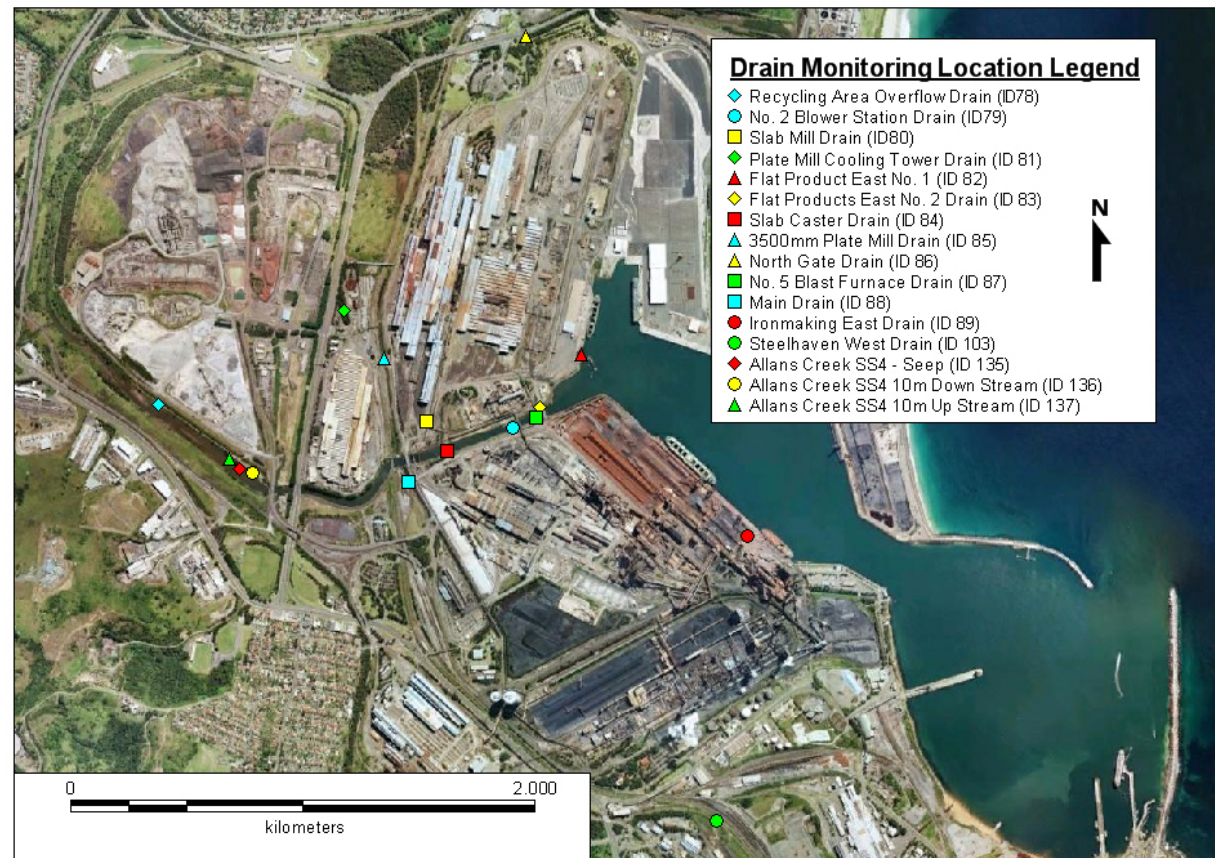
Pollutant	Monitoring frequency required by licence	No of significant emissions measured during month	100 Percentile Limit	Exceedance (yes/no) *
Emission - KISH Tipping DER 5	Monthly	0	4	no
<b>Comment:</b>				

**O4.14**

Pollutant	Monitoring frequency required by licence	No of significant emissions measured during month	100 Percentile Limit	Exceedance (yes/no) *
Emission - Torpedo Ladle DER>3	Monthly	0	4	no
<b>Comment:</b>				

## Water and/or Land Monitoring Requirements

EPL6092 Condition M2.4/M2.5/M8.1/M8.3



**Point 78:**

Pollutant	Units of Measure	Monitoring frequency required by licence	No. of times measured during month	Min. Value	Mean Value	Median Value	Max. Value
Volume of Liquids Discharged	Kilolitres per day	Daily	Continuous	0.00	28.58	0.00	666.00
<b>Comment:</b>							

**Point 79:**

Pollutant	Units of Measure	Monitoring frequency required by licence	No. of times measured during month	Min. Value	Max Value	100 percentile Dry limit (Wet limit)	Exceedance (yes / no) *
Ammonia	Milligrams per litre	Every 8 days	4	<0.0600	<0.0600	5.0 (5.0)	no
Cyanide	Milligrams per litre	Every 8 days	4	<0.0200	<0.0200	0.30 (0.30)	no
Filtrable Iron	Milligrams per litre	Every 8 days	4	<0.0100	0.0120	0.3 (0.3)	no
Oil and Grease	Milligrams per litre	Every 8 days	4	<5.0000	<5.0000	20 (50)	no
pH		Every 8 days	4	8.10	8.20	6.5-9.0 (6.5-9.0)	no
Temperature	Degrees Celcius	Every 8 days	4	21.90	25.90	40 (40)	no
Total Iron	Milligrams per litre	Every 8 days	4	0.0550	0.0970	3 (50)	no
Total Suspended Solids	Milligrams per litre	Every 8 days	4	6.00	19.00	50 (500)	no
Total Zinc	Milligrams per litre	Every 8 days	4	<0.0500	<0.0500	3 (3)	no
Volume of Liquids Discharged	Kilolitres per day	Daily	Continuous	500,177.00	666,758.00		
<b>Comment:</b>							

**Point 80:**

Pollutant	Units of Measure	Monitoring frequency required by licence	No. of times measured during month	Min. Value	Max Value	100 percentile Dry limit (Wet limit)	Exceedance (yes / no) *
Cyanide	Milligrams per litre	6/yr. Min 50 days apart.	1	<0.0200	<0.0200	0.10 (0.00)	no
pH		6/yr. Min 50 days apart.	1	8.20	8.20	6.5-9.0 (0.0-0.0)	no
Volume of Liquids Discharged	Kilolitres per day	Daily	Continuous	2,264.00	6,042.00		
<b>Comment:</b>							

**Point 82:**

Pollutant	Units of Measure	Monitoring frequency required by licence	No. of times measured during month	Min. Value	Max Value	100 percentile Dry limit (Wet limit)	Exceedance (yes / no) *
Volume of Liquids Discharged	Kilolitres per day	Daily	Continuous	0.00	3,393.00		
<b>Comment:</b>							

**Point 83:**

Pollutant	Units of Measure	Monitoring frequency required by licence	No. of times measured during month	Min. Value	Max Value	100 percentile Dry limit (Wet limit)	Exceedance (yes / no) *
Volume of Liquids Discharged	Kilolitres per day	Daily	Continuous	0.00	1,005.00		
<b>Comment:</b>							

**Point 85:**

Pollutant	Units of Measure	Monitoring frequency required by licence	No. of times measured during month	Min. Value	Max Value	100 Percentile Limit	Exceedance (yes / no) *
Oil and Grease	Milligrams per litre	24/year. Min 15 days apart	2	<5.0000	<5.0000	20.0000	no
pH		24/year. Min 15 days apart	2	8.20	8.20	6.5-9.0	no
Temperature	Degrees Celcius	24/year. Min 15 days apart	2	21.90	21.90	35.00	no
Total Suspended Solids	Milligrams per litre	24/year. Min 15 days apart	2	6.40	18.00	50.00	no
Volume of Liquids Discharged	Kilolitres per day	Daily	Continuous	28,923.00	33,096.00		no
<b>Comment:</b>							

**Point 87:**

Pollutant	Units of Measure	Monitoring frequency required by licence	No. of times measured during month	Min. Value	Max Value	100 percentile Dry limit (Wet limit)	Exceedance (yes / no) *
Ammonia	Milligrams per litre	Every 8 days	4	<0.0600	<0.0600	10.0 (10.0)	no
Cyanide	Milligrams per litre	Every 8 days	4	<0.0200	<0.0200	0.30 (0.30)	no
Filtrable Iron	Milligrams per litre	Every 8 days	4	<0.0100	0.0110	1.5 (1.5)	no
Lead	Milligrams per litre	Every 8 days	4	<0.020	<0.020	0.5 (0.5)	no
Mercury	Micrograms per litre	Every 8 days	4	<0.50	<0.50	1.5 (1.5)	no
pH		Every 8 days	4	8.10	8.20	6.5-11.0 (6.5-11.0)	no
Temperature	Degrees Celcius	Every 8 days	4	18.90	20.90	40 (40)	no
Total Iron	Milligrams per litre	Every 8 days	4	0.0710	0.1370	7 (100)	no
Total Suspended Solids	Milligrams per litre	Every 8 days	4	<3.00	8.80	70 (500)	no
Volume of Liquids Discharged	Kilolitres per day	Daily	Continuous*	1,689.00	2,358.00		
<b>Comment:</b> F YdUf k cf _'rc Wcb]bi ci g'a cb]rcf]b[ 'Yei ]da YbrZ%' 'XU] mZck g'a ]gg]b[ "							



**Point 88:**

Pollutant	Units of Measure	Monitoring frequency required by licence	No. of times measured during month	Min. Value	Max Value	100 percentile Dry limit (Wet limit)	Exceedance (yes / no) *
Ammonia	Milligrams per litre	Every 8 days	4	<0.0600	<0.0600	7.5 (7.5)	no
Ammonia	Tonnes per day	Every 8 days	4	0.004	0.005	1.200	no
Cyanide	Kilograms per day	Every 8 days	4	0.0	0.0	27.00	no
Cyanide	Milligrams per litre	Every 8 days	4	<0.0200	<0.0200	0.30 (0.30)	no
Oil and Grease	Milligrams per litre	Every 8 days	4	<5.0000	<5.0000	20 (50)	no
Oil and Grease	Tonnes per day	Every 8 days	4	0.0	0.0	2.50	no
pH		Every 8 days	4	7.90	8.10	6.5-9.0 (6.5-9.0)	no
Phenol	Kilograms per day	Every 8 days	4	0.0	0.0	35.00	no
Phenol	Milligrams per litre	Every 8 days	4	<0.2000	<0.2000	0.45 (0.45)	no
Temperature	Degrees Celcius	Every 8 days	4	20.90	26.90	40 (40)	no
Total Suspended Solids	Milligrams per litre	Every 8 days	4	3.20	7.60	100 (200)	no
Total Suspended Solids	Tonnes per day	Every 8 days	4	0.40	0.94	12.00	no
Total Zinc	Kilograms per day	Every 8 days	4	0.0	0.0	35.00	no
Total Zinc	Milligrams per litre	Every 8 days	4	<0.0500	<0.0500	3 (3)	no
Volume of Liquids Discharged	Kilolitres per day	Daily	Continuous	123,165.00	214,090.00		
<b>Comment:</b>							

**Point 89:**

Pollutant	Units of Measure	Monitoring frequency required by licence	No. of times measured during month	Min. Value	Max Value	100 percentile Dry limit (Wet limit)	Exceedance (yes / no) *
Ammonia	Milligrams per litre	Every 8 days	7	<0.0600	0.2700	7.0 (7.0)	no
Cyanide	Milligrams per litre	Every 8 days	7	<0.02	0.0230	0.20 (0.20)	no
Filtrable Iron	Milligrams per litre	Every 8 days	7	0.0150	0.0220	0.5 (0.5)	no
Fluoride	Milligrams per litre	Every 8 days	7	1.00	1.60	50 (50)	no
pH		Every 8 days	7	8.10	8.20	6.5-9.0 (6.5-9.0)	no
Temperature	Degrees Celcius	Every 8 days	7	19.90	21.90	45 (45)	no
Total Iron	Milligrams per litre	Every 8 days	7	0.2010	0.4470	7 (20)	no
Total Suspended Solids	Milligrams per litre	Every 8 days	7	<3.00	17.00	100 (200)	no
Total Zinc	Milligrams per litre	Every 8 days	7	<0.0500	<0.0500	3 (3)	no
Volume of Liquids Discharged	Kilolitres per day	Daily	Continuous	10,243.00	24,710.00		
<b>Comment:</b>							