



Bluescope Steel (AIS) Pty Ltd
ABN 19 000 019625
Port Kembla Steelworks
Five Islands Road
Port Kembla 2505
PO Box 1854
Wollongong NSW 2500

BLUESCOPE STEEL (AIS) PTY. LTD.
Port Kembla Steelworks
Licence 6092

[Link to Environment Protection Licence EPL6092](#)

LICENCE MONITORING DATA
MONTHLY SUMMARY REPORT

for

1 Apr 2013 to 30 Apr 2013

Stack Air Monitoring Requirements

EPL6092 Conditions M2.2/M2.3/M8.2/E1.4



Point 40:

| Pollutant | Units of Measure | Monitoring frequency required by licence | No. of times measured during month | Min. Value | Max Value | 100 Percentile Limit | Exceedance (yes / no) * |
|---|----------------------------|--|------------------------------------|------------|-----------|----------------------|-------------------------|
| Cadmium (7% Oxygen correction) | Milligrams per cubic metre | Yearly | 2 | <0.00020 | <0.00020 | 0.10000 | no |
| Carbon Dioxide | Percent | Yearly | 4 | 18.000 | 18.000 | | no |
| Carbon Monoxide (7% Oxygen correction) | Milligrams per cubic metre | Yearly | 4 | <3.00 | 5.00 | 400.00 | no |
| Dry Gas Density | Kilograms per cubic metre | Yearly | 15 | 1.39 | 1.40 | | no |
| Mercury (7% Oxygen correction) | Milligrams per cubic metre | Yearly | 2 | 0.00160 | 0.00180 | 0.10000 | no |
| Moisture | Percent | Yearly | 15 | 10.00 | 11.00 | | no |
| Molecular Weight of stack gases | grams per gram mole | Yearly | 15 | 31.20 | 31.60 | | no |
| Nitrogen Oxides (7% Oxygen correction) | Milligrams per cubic metre | Yearly | 4 | 177.00 | 194.00 | 600.00 | no |
| Oxygen (O2) | Percent | Yearly | 4 | 4.50 | 4.70 | | no |
| Solid Particles (7% Oxygen corrected) | Milligrams per cubic metre | Yearly | 2 | 3.00 | 3.60 | 30.00 | no |
| Sulphur Dioxide (7% Oxygen correction) | Milligrams per cubic metre | Yearly | 4 | 248.00 | 274.00 | 1,250.00 | no |
| Temperature | Degrees Celcius | Yearly | 15 | 157.00 | 166.00 | | no |
| Type 1 and 2 substances in aggregate (7% Oxygen correction) | Milligrams per cubic metre | Yearly | 2 | 0.0140 | 0.0140 | 1.0000 | no |
| Velocity | Metres per second | Yearly | 15 | 9.20 | 10.00 | | no |
| Volumetric flowrate | Cubic metres per second | Yearly | 15 | 56.00 | 62.00 | | no |

Comment:

Point 120:

| Pollutant | Units of Measure | Monitoring frequency required by licence | No. of times measured during month | Min. Value | Max Value | 100 Percentile Limit | Exceedance (yes / no) * |
|---|----------------------------|--|------------------------------------|------------|-----------|----------------------|-------------------------|
| Cadmium (7% Oxygen correction) | Milligrams per cubic metre | Yearly | 1 | 0.00110 | 0.00110 | 0.10000 | no |
| Carbon Dioxide | Percent | Yearly | 4 | 3.200 | 3.900 | | no |
| Carbon Monoxide (7% Oxygen correction) | Milligrams per cubic metre | Yearly | 4 | <3.00 | <3.00 | 400.00 | no |
| Dry Gas Density | Kilograms per cubic metre | Yearly | 10 | 1.30 | 1.33 | | no |
| Mercury (7% Oxygen correction) | Milligrams per cubic metre | Yearly | 1 | <0.00048 | <0.00048 | 0.10000 | no |
| Moisture | Percent | Yearly | 10 | 11.00 | 15.00 | | no |
| Molecular Weight of stack gases | grams per gram mole | Yearly | 10 | 29.20 | 29.70 | | no |
| Nitrogen Oxides (7% Oxygen correction) | Milligrams per cubic metre | Yearly | 4 | 443.00 | 494.00 | 450.00 | yes* |
| Oxygen (O2) | Percent | Yearly | 4 | 13.00 | 14.00 | | no |
| Solid Particles (7% Oxygen corrected) | Milligrams per cubic metre | Yearly | 1 | 17.00 | 17.00 | 30.00 | no |
| Sulphur Dioxide (7% Oxygen correction) | Milligrams per cubic metre | Yearly | 4 | 661.00 | 716.00 | 1,250.00 | no |
| Temperature | Degrees Celcius | Yearly | 10 | 210.00 | 266.00 | | no |
| Type 1 and 2 substances in aggregate (7% Oxygen correction) | Milligrams per cubic metre | Yearly | 1 | 0.0410 | 0.0410 | 1.0000 | no |
| Velocity | Metres per second | Yearly | 10 | 16.00 | 23.00 | | no |
| Volumetric flowrate | Cubic metres per second | Yearly | 10 | 60.00 | 80.00 | | no |

Comment: *NOx exceeded 100 percentile concentration limit for 3 of the 4 samples taken. Under investigation.



Bluescope Steel (AIS) Pty Ltd
ABN 19 000 019625
Port Kembla Steelworks
Five Islands Road
Port Kembla 2505
PO Box 1854
Wollongong NSW 2500

Ambient Air Monitoring Requirements

EPL6092 Condition M2.2/M2.3/O4.13/O4.14 (Cont.)

Point 140: Residential Receiver 1 (South of Licenced site)

| Pollutant | Units of Measure | Monitoring frequency required by licence | No. of times measured during month | Min. Value | Mean Value | Median Value | Max. Value |
|----------------------------------|----------------------------------|---|------------------------------------|------------|------------|--------------|------------|
| Ash | Grams per square metre per month | Monthly | 1 | 0.00 | 0.00 | 0.00 | 0.00 |
| Benzene | Parts per billion | Every 6 days | 5 | 0.0370 | 0.0898 | 0.0710 | 0.1700 |
| Insoluble Solid | Grams per square metre per month | Monthly | 1 | 0.50 | 0.50 | 0.50 | 0.50 |
| Iron | Micrograms per cubic metre | Every 6 days | 5 | 0.24 | 0.85 | 1.00 | 1.40 |
| Polycyclic aromatic hydrocarbons | Nanograms per cubic metre | 24 hour period every 6 days | 5 | 0.68 | 0.74 | 0.69 | 0.85 |
| Polycyclic aromatic hydrocarbons | Nanograms per cubic metre | A weekly sample when the wind is blowing wind direction 0-60 degrees. | 1 | 33.00 | 33.00 | 33.00 | 33.00 |
| Total suspended particles | Micrograms per cubic metre | Every 6 days | 5 | 14.00 | 27.60 | 24.00 | 45.00 |
| Zinc | Micrograms per cubic metre | Every 6 days | 5 | <0.12 | 0.06 | 0.07 | <0.13 |
| Comment: | | | | | | | |

Point 141: Residential Receiver 2 (located south of licensed site)

| Pollutant | Units of Measure | Monitoring frequency required by licence | No. of times measured during month | Min. Value | Mean Value | Median Value | Max. Value |
|----------------------------------|----------------------------|--|------------------------------------|------------|------------|--------------|------------|
| Benzene | Parts per billion | Every 6 days | 5 | 0.0490 | 0.1438 | 0.1300 | 0.3100 |
| Iron | Micrograms per cubic metre | Every 6 days | 5 | 0.40 | 1.13 | 1.10 | 2.50 |
| Polycyclic aromatic hydrocarbons | Nanograms per cubic metre | 24 hour period every 6 days. | 5 | 0.82 | 2.82 | 1.70 | 7.50 |
| Total suspended particles | Micrograms per cubic metre | Every 6 days | 5 | 18.00 | 34.80 | 42.00 | 48.00 |
| Zinc | Micrograms per cubic metre | Every 6 days | 5 | <0.12 | 0.06 | 0.07 | <0.13 |
| Comment: | | | | | | | |

Point 142: Residential Receiver 3 (located South West of licensed site)

| Pollutant | Units of Measure | Monitoring frequency required by licence | No. of times measured during month | Min. Value | Mean Value | Median Value | Max. Value |
|---------------------------|----------------------------|--|------------------------------------|------------|------------|--------------|------------|
| Iron | Micrograms per cubic metre | Every 6 days | 5 | 0.20 | 1.51 | 0.51 | 3.90 |
| Total suspended particles | Micrograms per cubic metre | Every 6 days | 5 | 13.00 | 28.80 | 23.00 | 52.00 |
| Zinc | Micrograms per cubic metre | Every 6 days | 5 | <0.12 | 0.08 | 0.07 | 0.14 |
| Comment: | | | | | | | |

Point 143: Residential Receiver 4 (located North East of licensed site)

| Pollutant | Units of Measure | Monitoring frequency required by licence | No. of times measured during month | Min. Value | Mean Value | Median Value | Max. Value |
|---------------------------|----------------------------------|--|------------------------------------|------------|------------|--------------|------------|
| Ash | Grams per square metre per month | Monthly | 1 | 0.60 | 0.60 | 0.60 | 0.60 |
| Insoluble Solid | Grams per square metre per month | Monthly | 1 | 1.50 | 1.50 | 1.50 | 1.50 |
| Iron | Micrograms per cubic metre | Every 6 days | 5 | 0.89 | 1.32 | 1.10 | 2.40 |
| Total suspended particles | Micrograms per cubic metre | Every 6 days | 5 | 21.00 | 40.20 | 33.00 | 60.00 |
| Zinc | Micrograms per cubic metre | Every 6 days | 5 | <0.12 | 0.09 | 0.07 | 0.20 |
| Comment: | | | | | | | |

Point 144: Residential Receiver 5 (located North of licensed site)

| Pollutant | Units of Measure | Monitoring frequency required by licence | No. of times measured during month | Min. Value | Mean Value | Median Value | Max. Value |
|-----------------|----------------------------------|--|------------------------------------|------------|------------|--------------|------------|
| Ash | Grams per square metre per month | Monthly | 1 | 0.80 | 0.80 | 0.80 | 0.80 |
| Insoluble Solid | Grams per square metre per month | Monthly | 1 | 1.70 | 1.70 | 1.70 | 1.70 |
| Comment: | | | | | | | |

Point 145: Residential Receiver 6 (located South of licensed site)

| Pollutant | Units of Measure | Monitoring frequency required by licence | No. of times measured during month | Min. Value | Mean Value | Median Value | Max. Value |
|-----------------|----------------------------------|--|------------------------------------|------------|------------|--------------|------------|
| Ash | Grams per square metre per month | Monthly | 1 | 1.30 | 1.30 | 1.30 | 1.30 |
| Insoluble Solid | Grams per square metre per month | Monthly | 1 | 2.50 | 2.50 | 2.50 | 2.50 |
| Comment: | | | | | | | |

Point 146: Residential Receiver 7 (located North West of licensed site)

| Pollutant | Units of Measure | Monitoring frequency required by licence | No. of times measured during month | Min. Value | Mean Value | Median Value | Max. Value |
|-----------------|----------------------------------|--|------------------------------------|------------|------------|--------------|------------|
| Ash | Grams per square metre per month | Monthly | 1 | 0.90 | 0.90 | 0.90 | 0.90 |
| Insoluble Solid | Grams per square metre per month | Monthly | 1 | 1.40 | 1.40 | 1.40 | 1.40 |
| Comment: | | | | | | | |

Point 147: Residential Receiver 8 (located South East of licensed site)

| Pollutant | Units of Measure | Monitoring frequency required by licence | No. of times measured during month | Min. Value | Mean Value | Median Value | Max. Value |
|-----------------|----------------------------------|--|------------------------------------|------------|------------|--------------|------------|
| Ash | Grams per square metre per month | Monthly | 1 | 2.70 | 2.70 | 2.70 | 2.70 |
| Insoluble Solid | Grams per square metre per month | Monthly | 1 | 6.80 | 6.80 | 6.80 | 6.80 |
| Comment: | | | | | | | |

Point 148: Residential Receiver 9 (located South of licensed site)

| Pollutant | Units of Measure | Monitoring frequency required by licence | No. of times measured during month | Min. Value | Mean Value | Median Value | Max. Value |
|-----------------|----------------------------------|--|------------------------------------|------------|------------|--------------|------------|
| Ash | Grams per square metre per month | Monthly | 1 | 1.10 | 1.10 | 1.10 | 1.10 |
| Insoluble Solid | Grams per square metre per month | Monthly | 1 | 1.80 | 1.80 | 1.80 | 1.80 |
| Comment: | | | | | | | |

Point 149: Residential Receiver 10 (located South West of licensed site)

| Pollutant | Units of Measure | Monitoring frequency required by licence | No. of times measured during month | Min. Value | Mean Value | Median Value | Max. Value |
|------------------------------------|----------------------------------|--|------------------------------------|------------|------------|--------------|------------|
| Ash | Grams per square metre per month | Monthly | 0* | | | | |
| Insoluble Solid | Grams per square metre per month | Monthly | 0* | | | | |
| Comment: *No access to site | | | | | | | |

Point 150: Residential Receiver 11 (located South East of licensed site)

| Pollutant | Units of Measure | Monitoring frequency required by licence | No. of times measured during month | Min. Value | Mean Value | Median Value | Max. Value |
|----------------------------------|---------------------------|---|------------------------------------|------------|------------|--------------|------------|
| Polycyclic aromatic hydrocarbons | Nanograms per cubic metre | weekly sample when the wind is blowing wind direction 225-315 degrees | 5 | 1.00 | 10.62 | 3.20 | 41.00 |
| Comment: | | | | | | | |

O4.12:

Meter 1

| Pollutant | Units of Measure | Monitoring frequency required by licence | No. of times measured during month | Min. Value | Mean Value | Median Value | Max. Value |
|-----------------|------------------|--|------------------------------------|------------|------------|--------------|------------|
| Opacity | % | Daily | Continuous | 1 | 8 | 6 | 88 |
| Comment: | | | | | | | |

Meter 2

| Pollutant | Units of Measure | Monitoring frequency required by licence | No. of times measured during month | Min. Value | Mean Value | Median Value | Max. Value |
|-----------------|------------------|--|------------------------------------|------------|------------|--------------|------------|
| Opacity | % | Daily | Continuous | 1 | 40 | 38 | 91 |
| Comment: | | | | | | | |

O4.13

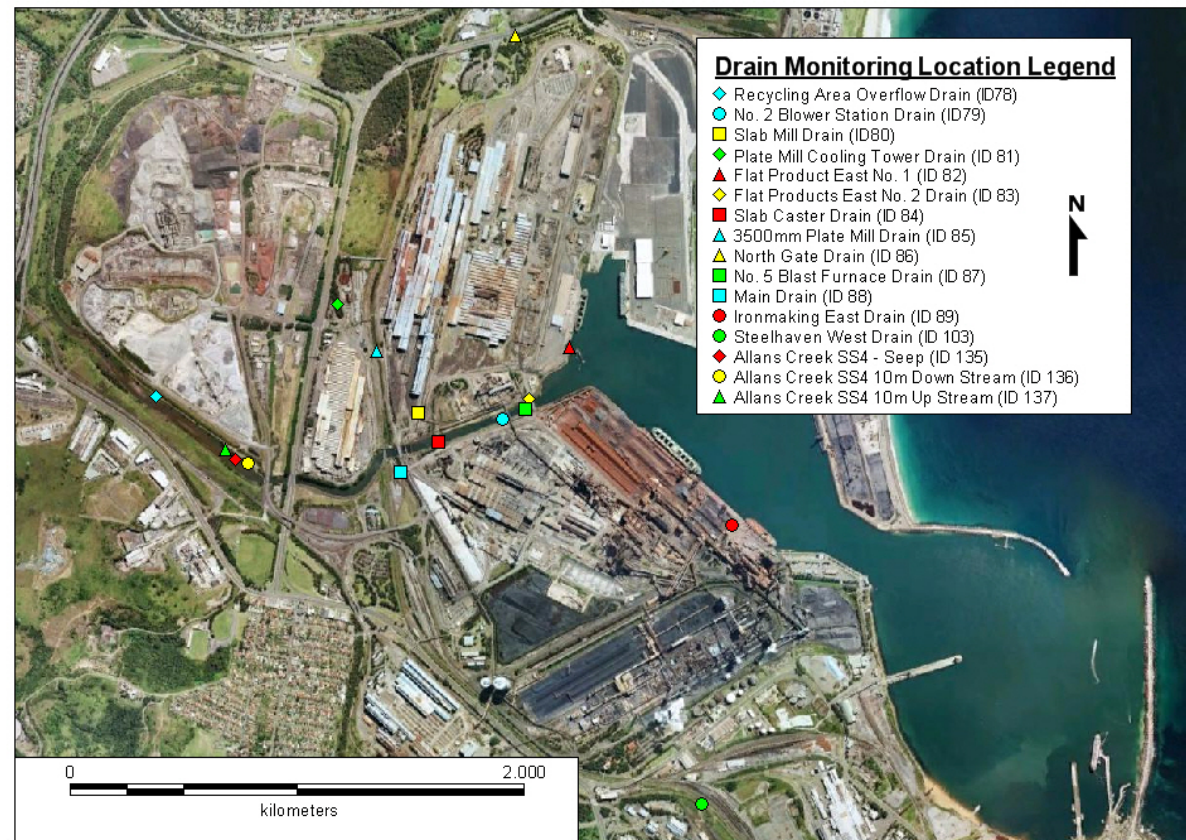
| Pollutant | Monitoring frequency required by licence | No of significant emissions measured during month | 100 Percentile Limit | Exceedance (yes/no) * |
|-------------------------------|--|---|----------------------|-----------------------|
| Emission - KISH Tipping DER 5 | Monthly | 0 | 4 | no |
| Comment: | | | | |

O4.14

| Pollutant | Monitoring frequency required by licence | No of significant emissions measured during month | 100 Percentile Limit | Exceedance (yes/no) * |
|--------------------------------|--|---|----------------------|-----------------------|
| Emission - Torpedo Ladle DER>3 | Monthly | 0 | 4 | no |
| Comment: | | | | |

Water and/or Land Monitoring Requirements

EPL6092 Condition M2.4/M2.5/M8.1/M8.3



Point 78:

| Pollutant | Units of Measure | Monitoring frequency required by licence | No. of times measured during month | Min. Value | Mean Value | Median Value | Max. Value |
|------------------------------|----------------------|--|------------------------------------|------------|------------|--------------|------------|
| pH | | Overflow | 1 | 8.30 | 8.30 | 8.30 | 8.30 |
| Total Suspended Solids | Milligrams per litre | Overflow | 1 | 130.00 | 130.00 | 130.00 | 130.00 |
| Volume of Liquids Discharged | Kilolitres per day | Daily | Continuous | 0.00 | 17.33 | 0.00 | 520.00 |
| Comment: | | | | | | | |

Point 79:

| Pollutant | Units of Measure | Monitoring frequency required by licence | No. of times measured during month | Min. Value | Max Value | 100 percentile Dry limit (Wet limit) | Exceedance (yes / no) * |
|------------------------------|----------------------|--|------------------------------------|------------|------------|--------------------------------------|-------------------------|
| Ammonia | Milligrams per litre | Every 8 days | 4 | <0.0600 | 0.9000 | 5.0 (5.0) | no |
| BOD | Milligrams per litre | Every 8 days | 4 | <2.00 | <2.00 | 20 (20) | no |
| Cadmium | Milligrams per litre | Every 8 days | 4 | <0.005 | <0.005 | 0.06 (0.06) | no |
| Cyanide | Milligrams per litre | Every 4 days | 8 | <0.0050 | 0.0450 | 0.30 (0.30) | no |
| Filtrable Iron | Milligrams per litre | Every 8 days | 4 | <0.0100 | <0.0100 | 0.3 (0.3) | no |
| Lead | Milligrams per litre | Every 8 days | 4 | <0.020 | <0.020 | 0.1 (0.1) | no |
| Oil and Grease | Milligrams per litre | Every 8 days | 4 | <5.0000 | <5.0000 | 20 (50) | no |
| pH | | Every 8 days | 4 | 8.00 | 8.60 | 6.5-9.0 (6.5-9.0) | no |
| Temperature | Degrees Celcius | Every 8 days | 4 | 28.00 | 30.00 | 40 (40) | no |
| Total Iron | Milligrams per litre | Every 8 days | 4 | 0.1140 | 2.1400 | 3 (50) | no |
| Total Suspended Solids | Milligrams per litre | Every 8 days | 4 | 2.80 | 28.00 | 50 (500) | no |
| Total Zinc | Milligrams per litre | Every 8 days | 4 | <0.0500 | <0.0500 | 3 (3) | no |
| Volume of Liquids Discharged | Kilolitres per day | Daily | Continuous | 425,601.00 | 588,146.00 | | |
| Comment: | | | | | | | |

Point 80:

| Pollutant | Units of Measure | Monitoring frequency required by licence | No. of times measured during month | Min. Value | Max Value | 100 percentile Dry limit (Wet limit) | Exceedance (yes / no) * |
|------------------------------|----------------------|--|------------------------------------|------------|-----------|--------------------------------------|-------------------------|
| Cyanide | Milligrams per litre | 6/yr. Min 50 days apart. | 1 | 0.0270 | 0.0270 | 0.10 (0.10) | no |
| pH | | 6/yr. Min 50 days apart. | 1 | 7.80 | 7.80 | 6.5-9.0 (6.5-9.0) | no |
| Volume of Liquids Discharged | Kilolitres per day | Daily | Continuous | 166.00 | 2,182.00 | | |
| Comment: | | | | | | | |

Point 82:

| Pollutant | Units of Measure | Monitoring frequency required by licence | No. of times measured during month | Min. Value | Max Value | 100 percentile Dry limit (Wet limit) | Exceedance (yes / no) * |
|------------------------------|----------------------|--|------------------------------------|------------|-----------|--------------------------------------|-------------------------|
| Cyanide | Milligrams per litre | Quarterly grab sample. Min 80 days apart | 1 | 0.0350 | 0.0350 | 0.30 (0.30) | no |
| Volume of Liquids Discharged | Kilolitres per day | Daily | Continuous | 0.00 | 4,077.00 | | |
| Comment: | | | | | | | |

Point 83:

| Pollutant | Units of Measure | Monitoring frequency required by licence | No. of times measured during month | Min. Value | Max Value | 100 percentile Dry limit (Wet limit) | Exceedance (yes / no) * |
|------------------------------|----------------------|--|------------------------------------|------------|-----------|--------------------------------------|-------------------------|
| Cyanide | Milligrams per litre | Quarterly grab sample. Min 80 days apart | 1 | 0.0200 | 0.0200 | 0.15 (0.15) | no |
| Volume of Liquids Discharged | Kilolitres per day | Daily | Continuous | 0.00 | 1,063.00 | | |
| Comment: | | | | | | | |

Point 85:

| Pollutant | Units of Measure | Monitoring frequency required by licence | No. of times measured during month | Min. Value | Max Value | 100 Percentile Limit | Exceedance (yes / no) * |
|------------------------------|----------------------|--|------------------------------------|------------|-----------|----------------------|-------------------------|
| Oil and Grease | Milligrams per litre | 24/year. Min 15 days apart | 2 | <5.0000 | <5.0000 | 20.0000 | no |
| pH | | 24/year. Min 15 days apart | 2 | 8.10 | 8.20 | 6.5-9.0 | no |
| Temperature | Degrees Celcius | 24/year. Min 15 days apart | 2 | 23.00 | 24.00 | 35.00 | no |
| Total Suspended Solids | Milligrams per litre | 24/year. Min 15 days apart | 2 | 2.80 | 15.00 | 50.00 | no |
| Volume of Liquids Discharged | Kilolitres per day | Daily | Continuous | 28,077.00 | 34,563.00 | | no |
| Comment: | | | | | | | |

Point 87:

| Pollutant | Units of Measure | Monitoring frequency required by licence | No. of times measured during month | Min. Value | Max Value | 100 percentile Dry limit (Wet limit) | Exceedance (yes / no) * |
|------------------------------|----------------------|--|------------------------------------|------------|-----------|--------------------------------------|-------------------------|
| Ammonia | Milligrams per litre | Every 8 days | 4 | <0.0600 | 0.7600 | 10.0 (10.0) | no |
| Cadmium | Milligrams per litre | Every 8 days | 4 | <0.005 | <0.005 | 0.15 (0.15) | no |
| Chromium (Total) | Milligrams per litre | Every 8 days | 4 | <0.010 | <0.010 | 0.6 (0.6) | no |
| Cyanide | Milligrams per litre | Every 8 days | 4 | 0.0050 | 0.0150 | 0.30 (0.30) | no |
| Filtrable Iron | Milligrams per litre | Every 8 days | 4 | <0.0100 | <0.0100 | 1.5 (1.5) | no |
| Lead | Milligrams per litre | Every 8 days | 4 | <0.020 | <0.020 | 0.5 (0.5) | no |
| Mercury | Micrograms per litre | Every 8 days | 4 | <0.10 | <0.10 | 1.5 (1.5) | no |
| Oil and Grease | Milligrams per litre | Every 8 days | 4 | <5.0000 | <5.0000 | 20 (20) | no |
| pH | | Every 8 days | 4 | 8.00 | 8.10 | 6.5-11.0 (6.5-11.0) | no |
| Temperature | Degrees Celcius | Every 8 days | 4 | 21.00 | 24.00 | 40 (40) | no |
| Total Iron | Milligrams per litre | Every 8 days | 4 | 0.0940 | 0.1230 | 7 (100) | no |
| Total Suspended Solids | Milligrams per litre | Every 8 days | 4 | <2.00 | 12.00 | 70 (500) | no |
| Volume of Liquids Discharged | Kilolitres per day | Daily | Continuous | 941.00 | 1,555.00 | | |
| Comment: | | | | | | | |

Point 88:

| Pollutant | Units of Measure | Monitoring frequency required by licence | No. of times measured during month | Min. Value | Max Value | 100 percentile Dry limit (Wet limit) | Exceedance (yes / no) * |
|------------------------------|----------------------|--|------------------------------------|------------|------------|--------------------------------------|-------------------------|
| Ammonia | Milligrams per litre | Every 4 days | 8 | <0.0600 | 0.2800 | 7.5 (7.5) | no |
| Ammonia | Tonnes per day | Every 4 days | 8 | 0.004 | 0.037 | 1.200 | no |
| Cadmium | Milligrams per litre | Every 8 days | 4 | <0.005 | <0.005 | 0.06 (0.06) | no |
| Cyanide | Kilograms per day | Every 4 days | 8 | 0.31 | 0.62 | 27.00 | no |
| Cyanide | Milligrams per litre | Every 4 days | 8 | <0.0050 | 0.0050 | 0.30 (0.30) | no |
| Lead | Milligrams per litre | Every 8 days | 4 | <0.020 | <0.020 | 0.1 (0.1) | no |
| Oil and Grease | Milligrams per litre | Every 8 days | 4 | <5.0000 | <5.0000 | 20 (50) | no |
| Oil and Grease | Tonnes per day | Every 8 days | 4 | 0.31 | 0.33 | 2.50 | no |
| pH | | Every 8 days | 4 | 8.00 | 8.20 | 6.5-9.0 (6.5-9.0) | no |
| Phenol | Kilograms per day | Every 8 days | 4 | 0.62 | 1.05 | 35.00 | no |
| Phenol | Milligrams per litre | Every 8 days | 4 | 0.0050 | 0.0080 | 0.45 (0.45) | no |
| Temperature | Degrees Celcius | Every 8 days | 4 | 29.00 | 31.00 | 40 (40) | no |
| Total Suspended Solids | Milligrams per litre | Every 4 days | 8 | 4.00 | 19.00 | 100 (200) | no |
| Total Suspended Solids | Tonnes per day | Every 4 days | 8 | 0.49 | 2.35 | 12.00 | no |
| Total Zinc | Kilograms per day | Every 8 days | 4 | 3.09 | 3.28 | 35.00 | no |
| Total Zinc | Milligrams per litre | Every 8 days | 4 | <0.0500 | <0.0500 | 3 (3) | no |
| Volume of Liquids Discharged | Kilolitres per day | Daily | Continuous | 123,566.00 | 185,468.00 | | |
| Comment: | | | | | | | |

Point 89:

| Pollutant | Units of Measure | Monitoring frequency required by licence | No. of times measured during month | Min. Value | Max Value | 100 percentile Dry limit (Wet limit) | Exceedance (yes / no) * |
|------------------------------|----------------------|--|------------------------------------|------------|-----------|--------------------------------------|-------------------------|
| Ammonia | Milligrams per litre | Every 4 days | 8 | 0.0800 | 0.9500 | 7.0 (7.0) | no |
| Arsenic | Micrograms per litre | Every 8 days | 4 | <10.00 | <10.00 | 50.00 | no |
| Cadmium | Milligrams per litre | Every 8 days | 4 | <0.005 | <0.005 | 0.05 (0.05) | no |
| Chromium (Total) | Milligrams per litre | Every 8 days | 4 | <0.010 | <0.010 | 0.350 | no |
| Copper | Milligrams per litre | Every 8 days | 4 | <0.010 | <0.010 | 1.000 | no |
| Cyanide | Milligrams per litre | Every 4 days | 8 | <0.0050 | 0.0100 | 0.20 (0.20) | no |
| Filtrable Iron | Milligrams per litre | Every 8 days | 4 | 0.0140 | 0.0360 | 0.5 (0.5) | no |
| Fluoride | Milligrams per litre | Every 8 days | 4 | <1.00 | 1.50 | 50 (50) | no |
| Lead | Milligrams per litre | Every 8 days | 4 | <0.020 | <0.020 | 0.2 (0.2) | no |
| Mercury | Micrograms per litre | Every 8 days | 4 | <0.10 | <0.10 | 3.0 (3.0) | no |
| Oil and Grease | Milligrams per litre | Every 8 days | 4 | <5.0000 | <5.0000 | 20 (20) | no |
| pH | | Every 8 days | 4 | 8.00 | 8.10 | 6.5-9.0 (6.5-9.0) | no |
| Selenium | Micrograms per litre | Every 8 days | 4 | <10.00 | <10.00 | 20.00 | no |
| Temperature | Degrees Celcius | Every 8 days | 4 | 22.00 | 25.00 | 45 (45) | no |
| Total Iron | Milligrams per litre | Every 8 days | 4 | 0.3800 | 1.5760 | 7 (20) | no |
| Total Suspended Solids | Milligrams per litre | Every 4 days | 8 | <2.00 | 16.00 | 100 (200) | no |
| Total Zinc | Milligrams per litre | Every 8 days | 4 | <0.0500 | 0.2000 | 3 (3) | no |
| Volume of Liquids Discharged | Kilolitres per day | Daily | Continuous | 10,131.00 | 17,895.00 | | |

Comment: